

**NCTronics**  
Motion Dynamics and Control

1881 ROSEBELLA AVENUE  
OTTAWA, ONTARIO K1T 1G6  
CANADA

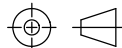
(613)-619-0053  
INFO@NCTRONICS.COM

	NAME	DATE
DRAWN	Salah Zenieh	
ENG APPR.	Pending	
MFG APPR.	Pending	
Q.A.	Pending	

NOTES  
N/A

UNLESS OTHERWISE SPECIFIED:  
DIMENSIONS ARE IN MILLIMETERS  
TOLERANCES:  $\pm 0.05$  MM  
GD&T ASME Y14.5-2009 IF USED  
+/- 1/32"

THIRD ANGLE PROJECTION



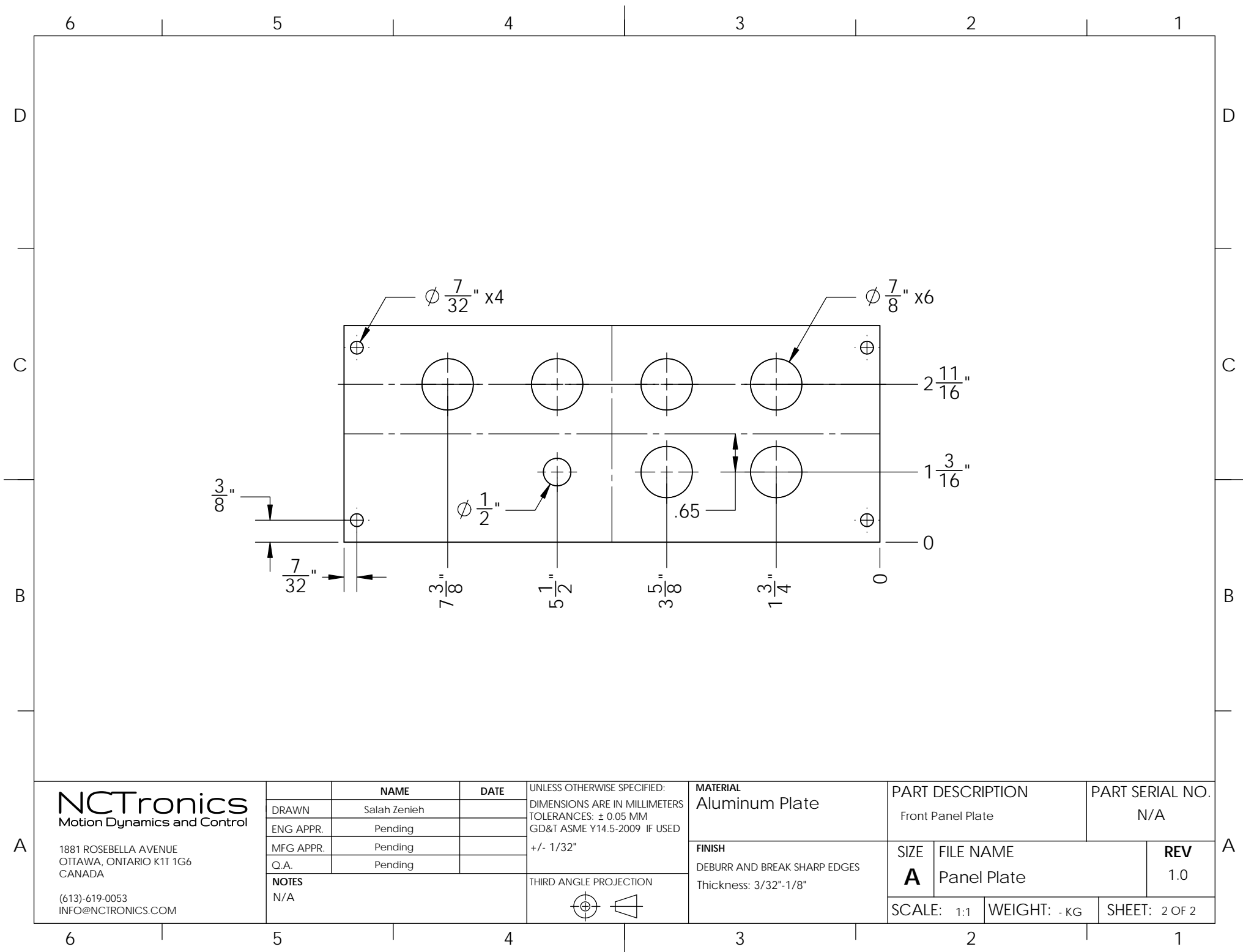
MATERIAL  
Aluminum Plate

FINISH  
DEBURR AND BREAK SHARP EDGES  
Thickness: 3/32"-1/8"

PART DESCRIPTION  
Front Panel Plate

PART SERIAL NO.  
N/A

SIZE	FILE NAME	REV
<b>A</b>	Panel Plate	1.0
SCALE: 1:1	WEIGHT: - KG	SHEET: 1 OF 2



**NCTronics**  
Motion Dynamics and Control

1881 ROSEBELLA AVENUE  
OTTAWA, ONTARIO K1T 1G6  
CANADA

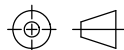
(613)-619-0053  
INFO@NCTRONICS.COM

	NAME	DATE
DRAWN	Salah Zenieh	
ENG APPR.	Pending	
MFG APPR.	Pending	
Q.A.	Pending	

NOTES  
N/A

UNLESS OTHERWISE SPECIFIED:  
DIMENSIONS ARE IN MILLIMETERS  
TOLERANCES:  $\pm 0.05$  MM  
GD&T ASME Y14.5-2009 IF USED  
+/- 1/32"

THIRD ANGLE PROJECTION



MATERIAL  
Aluminum Plate

FINISH  
DEBURR AND BREAK SHARP EDGES  
Thickness: 3/32"-1/8"

PART DESCRIPTION  
Front Panel Plate

PART SERIAL NO.  
N/A

SIZE	FILE NAME	REV
<b>A</b>	Panel Plate	1.0
SCALE: 1:1	WEIGHT: - KG	SHEET: 2 OF 2