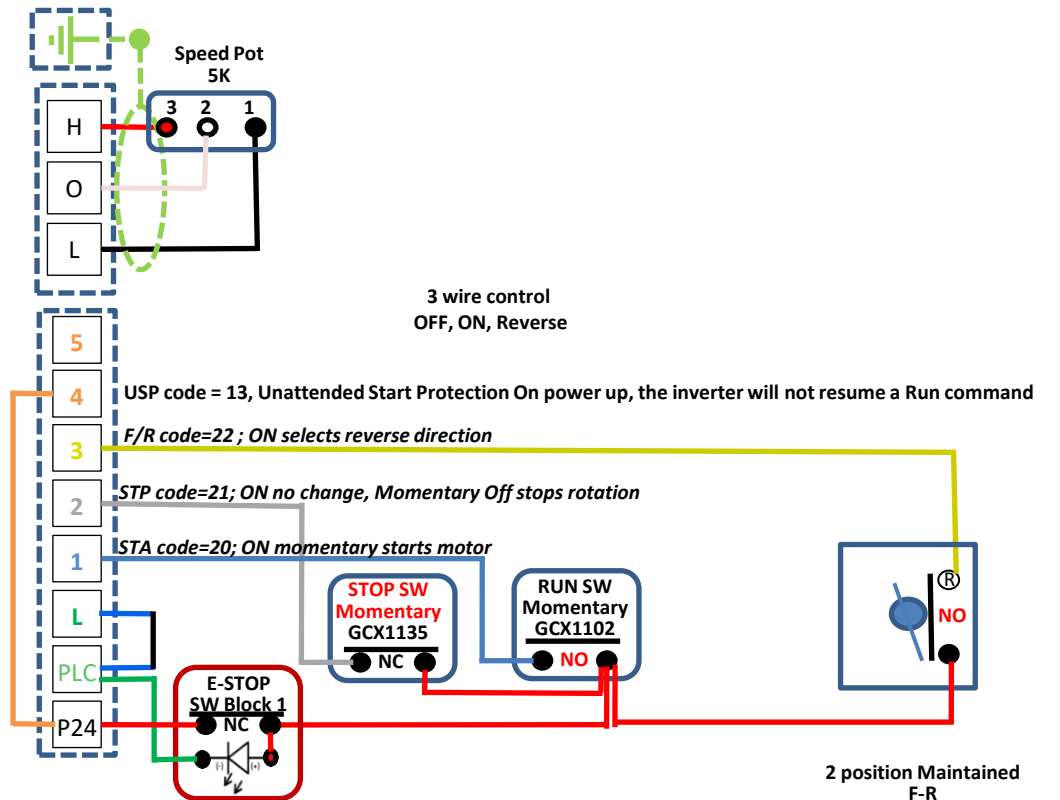


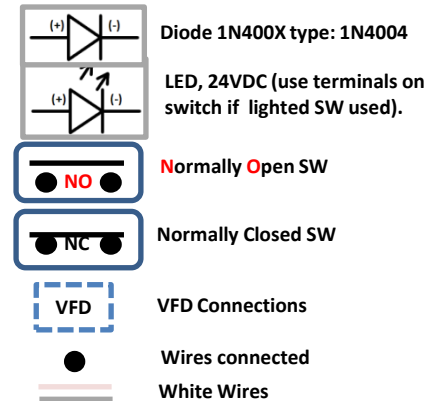
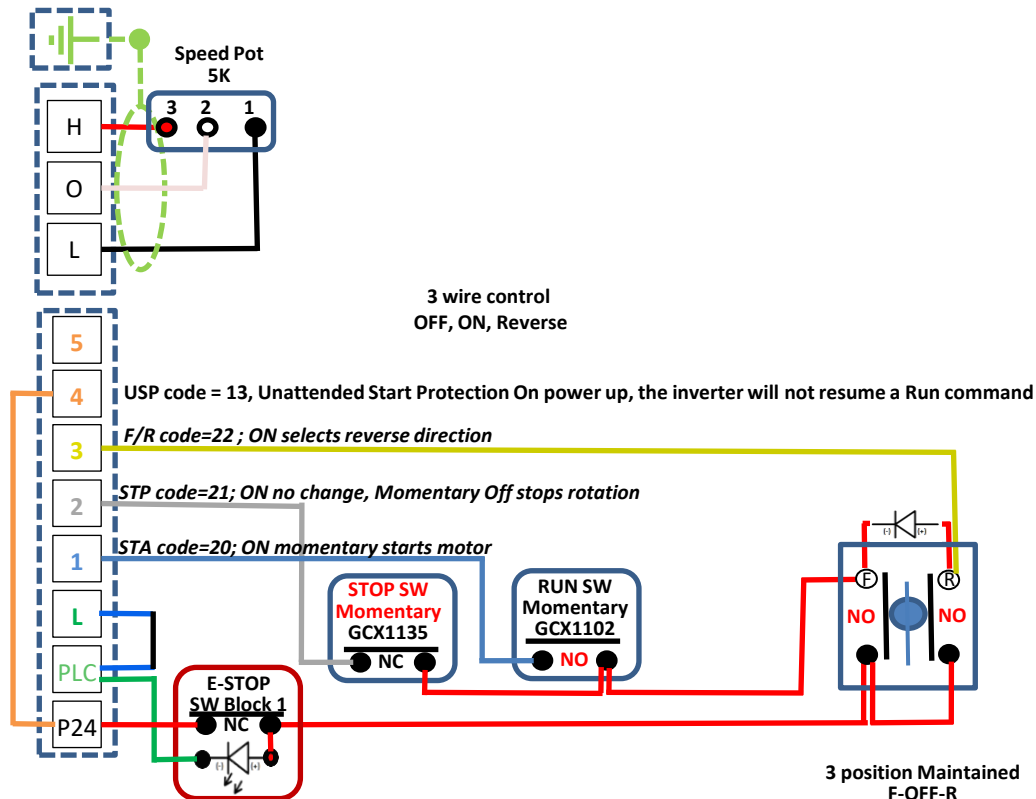
3 Wire Mill Control With Lighted ON E-Stop Switch with Start Protection

Hitachi WJ200 VFD must be wired for source logic
Mill will NOT stop when running forward and reverse is activated



3 Wire Mill Control With Lighted ON E-Stop Switch with Start Protection

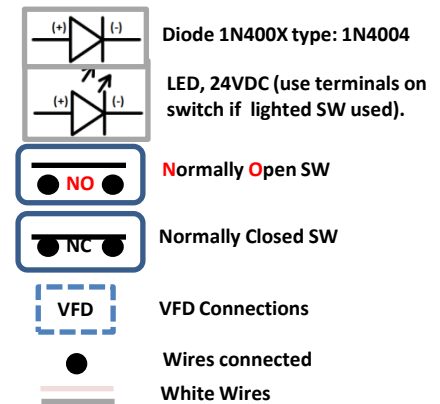
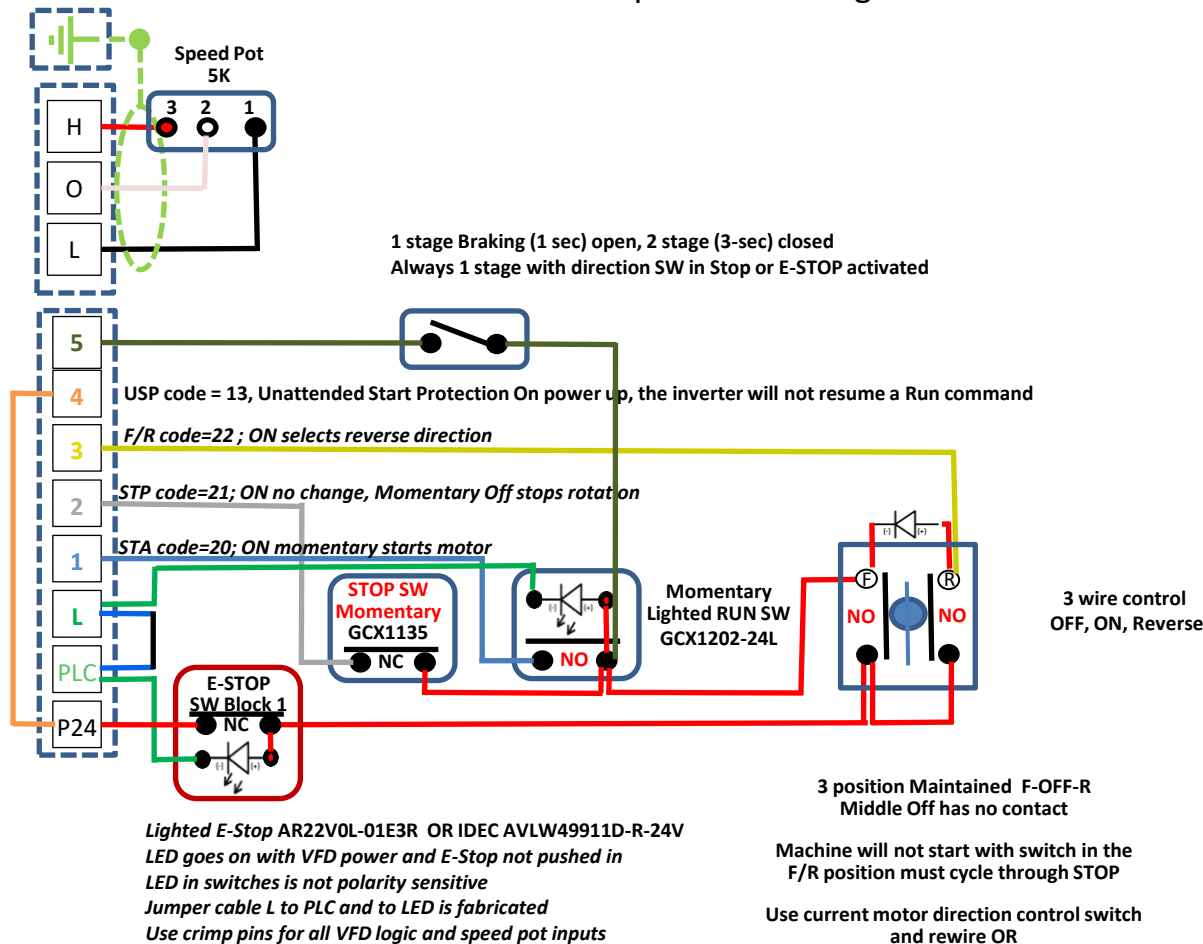
Hitachi WJ200 VFD must be wired for source logic
Mill WILL stop when running forward and reverse is activated



3 Wire Mill Control With Lighted ON E-Stop Switch with Start Protection

Momentary Green Run light is ON when RUN selector in F/R Position, 1 or 2 Stage Braking

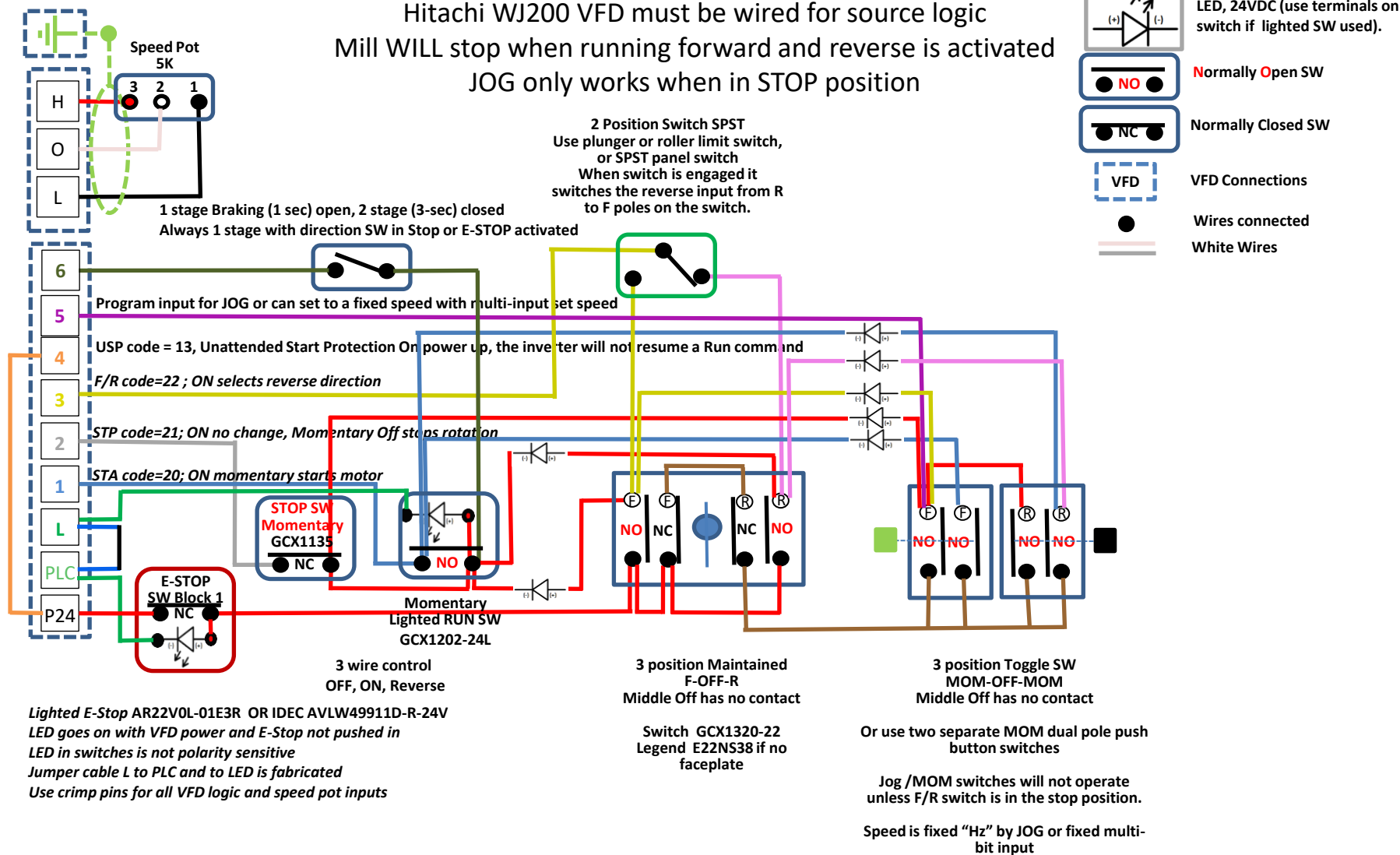
Hitachi WJ200 VFD must be wired for source logic
Mill WILL stop when running forward and reverse is activated



3 Wire Mill Control With Lighted ON E-Stop Switch with Start Protection

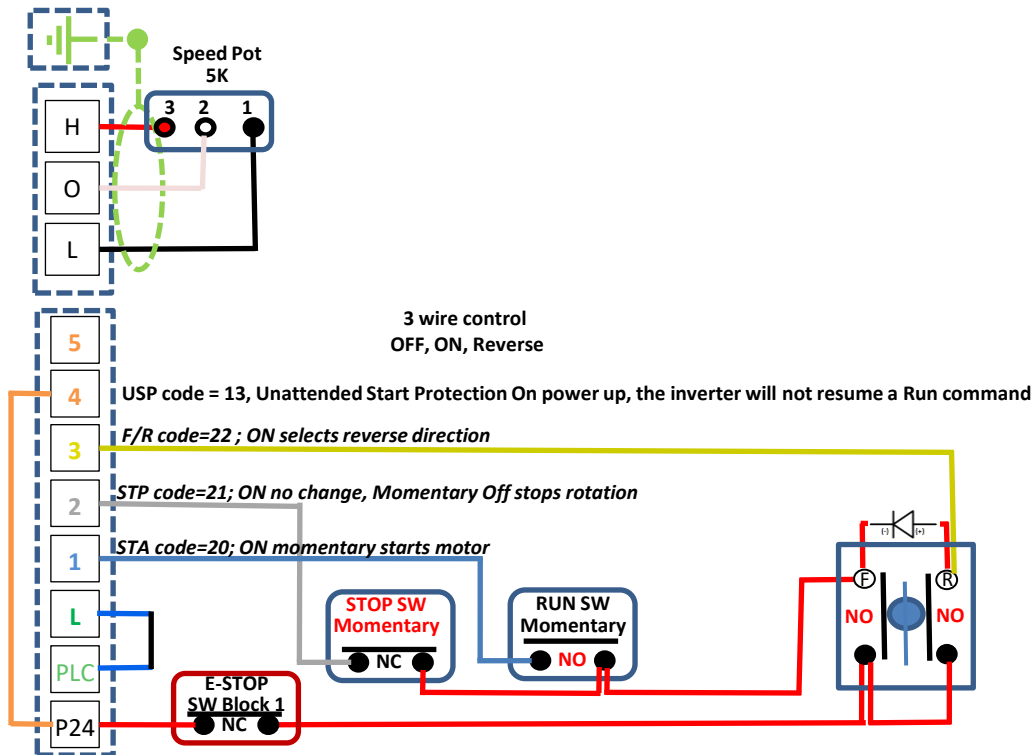
Momentary Green Run light is ON when RUN selector in F/R Position, 1 or 2 Stage Braking, Momentary JOG F/R, Back gear SW

Hitachi WJ200 VFD must be wired for source logic
Mill WILL stop when running forward and reverse is activated
JOG only works when in STOP position



Basic 3 Wire Mill Control With E-Stop Switch, no indicator ON light

Hitachi WJ200 VFD must be wired for source logic

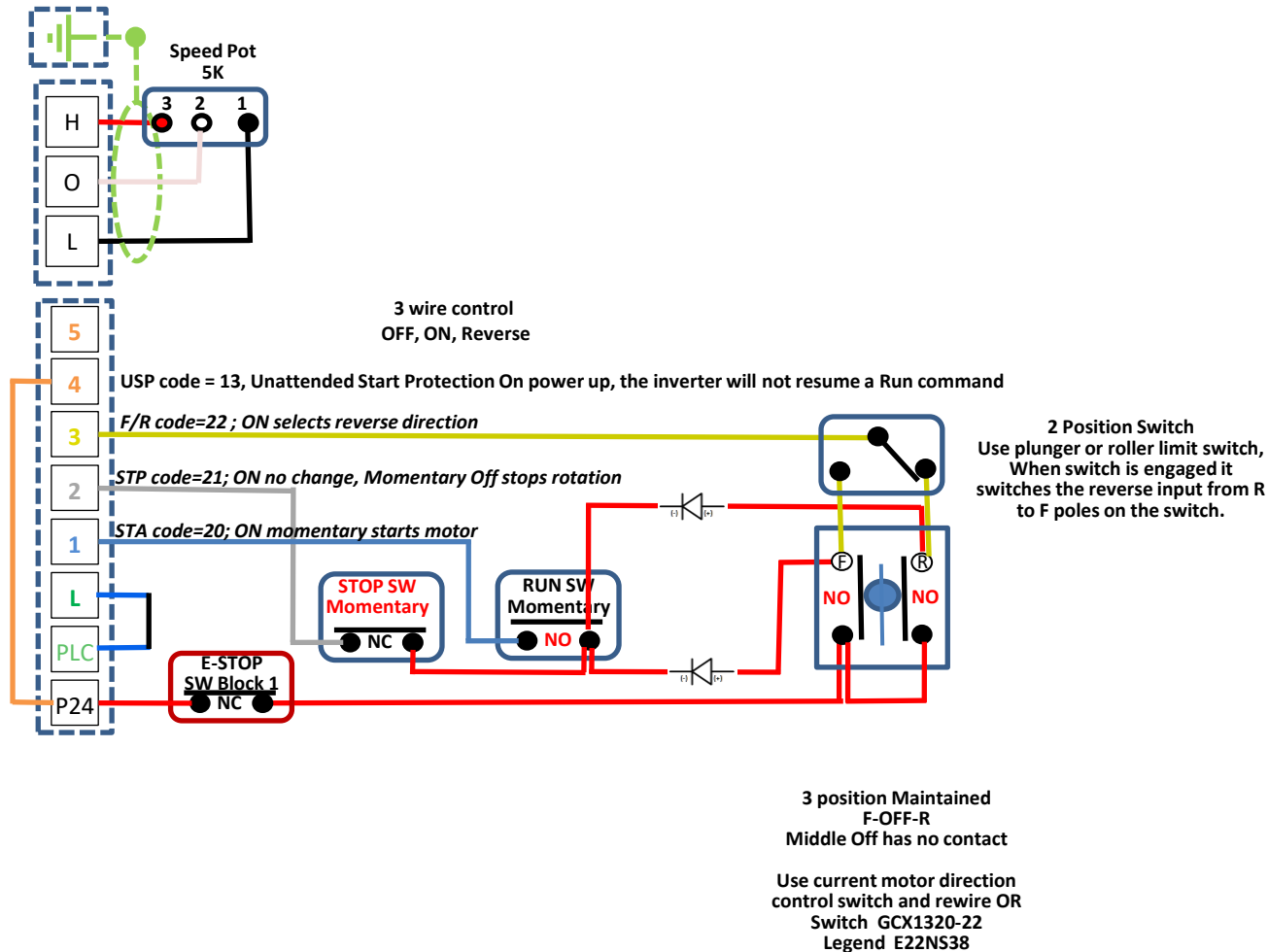


3 position Maintained
F-OFF-R
Middle Off has no contact

Use current motor direction
control switch and rewire OR
Switch GCX1320-22
Legend E22NS38

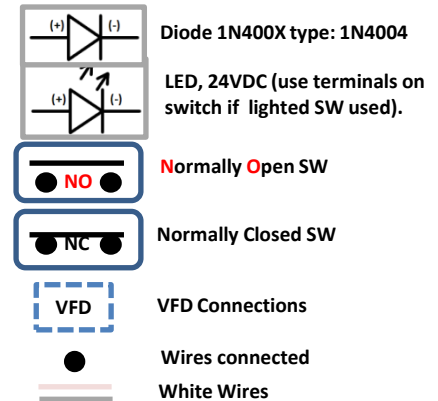
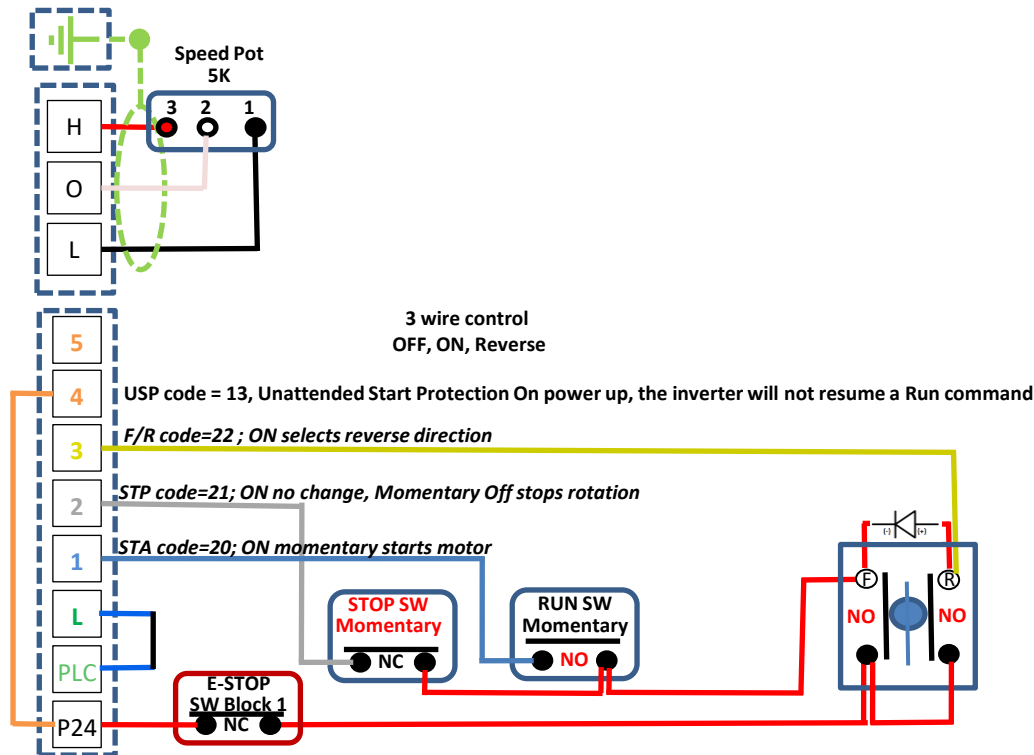
Basic 3 Wire Mill Control With E-Stop Switch, no indicator ON light

Hitachi WJ200 VFD must be wired for source logic
Backgear switch reverses the connections to input 3 (reverse)



3 Wire Mill Control With E-Stop Switch, no indicator ON light, with Start Protection

Hitachi WJ200 VFD must be wired for source logic



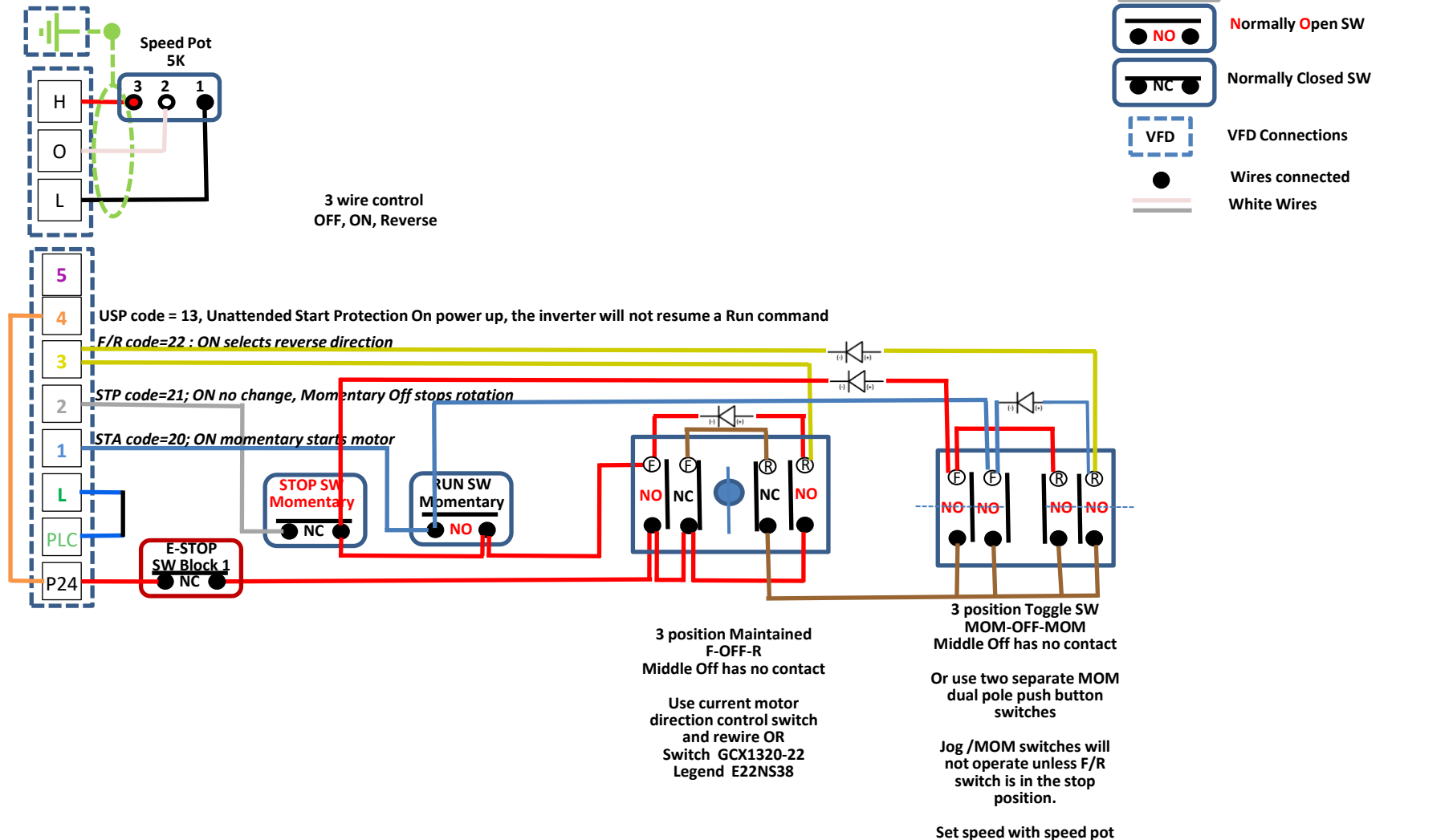
3 position Maintained
F-OFF-R
Middle Off has no contact

Machine will not start with
switch in the F/R position
must cycle through STOP

Use current motor
direction control switch
and rewire OR
Switch GCX1320-22
Legend E22NS38

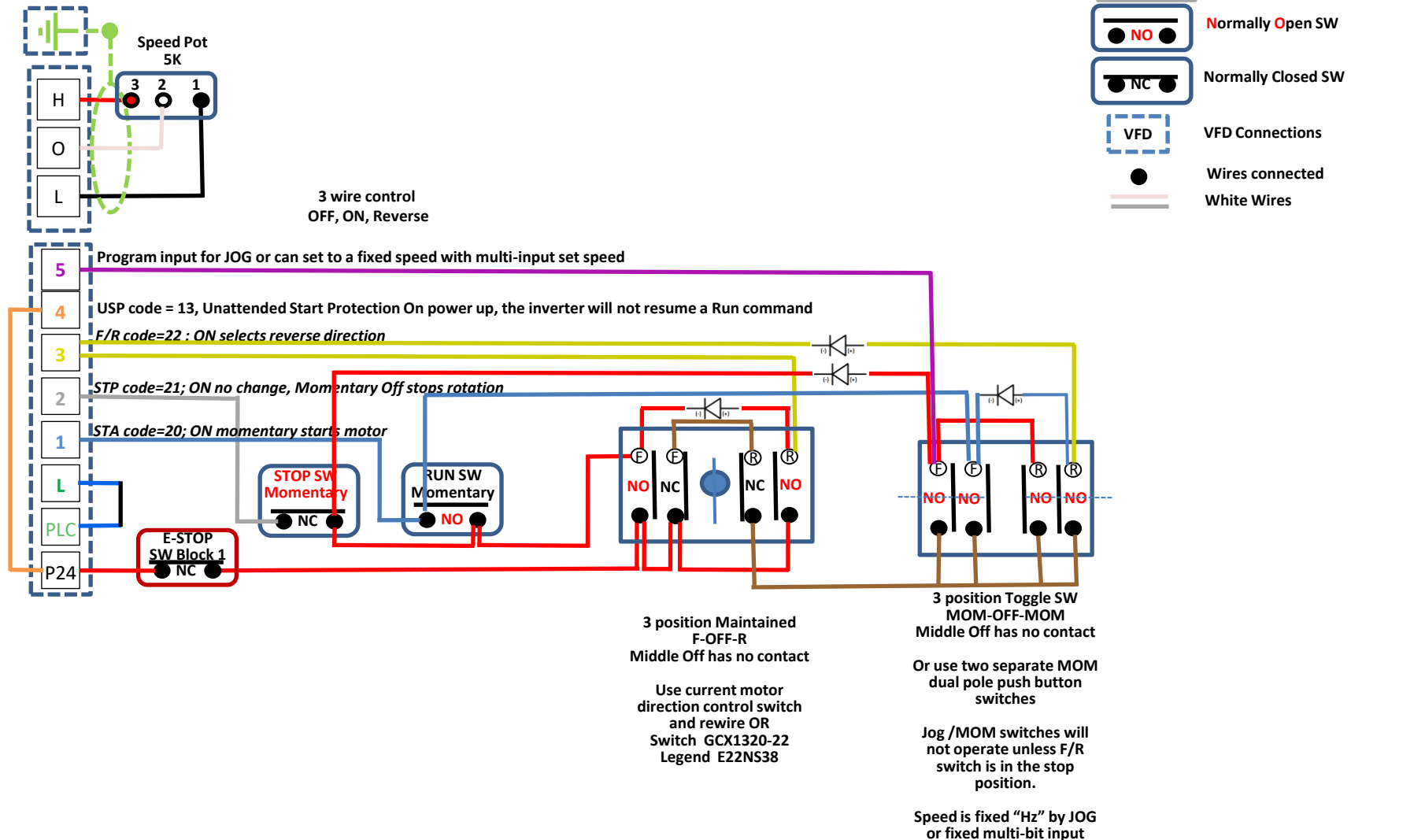
3 Wire Mill Control With E-Stop Switch, no indicator ON light with Start Protection

Hitachi WJ200 VFD must be wired for source logic
Momentary F/R using speed pot for RPM



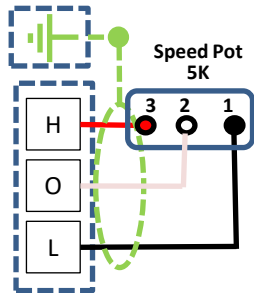
3 Wire Mill Control With E-Stop Switch, no indicator ON light with Start Protection

Hitachi WJ200 VFD must be wired for source logic
Momentary F/R using jog or multispeed input



3 Wire Mill Control With E-Stop Switch, no indicator ON light with Start Protection

Hitachi WJ200 VFD must be wired for source logic
Momentary F/R, Backgear SW, 1/2 Stage Braking
No Indicator Lights



1 stage Braking (1 sec) open, 2 stage (3-sec) closed
Always 1 stage with direction SW in Stop or E-STOP activated

Use plunger or roller limit switch,
When switch is engaged it
switches the reverse input from R
to F poles on the switch.

