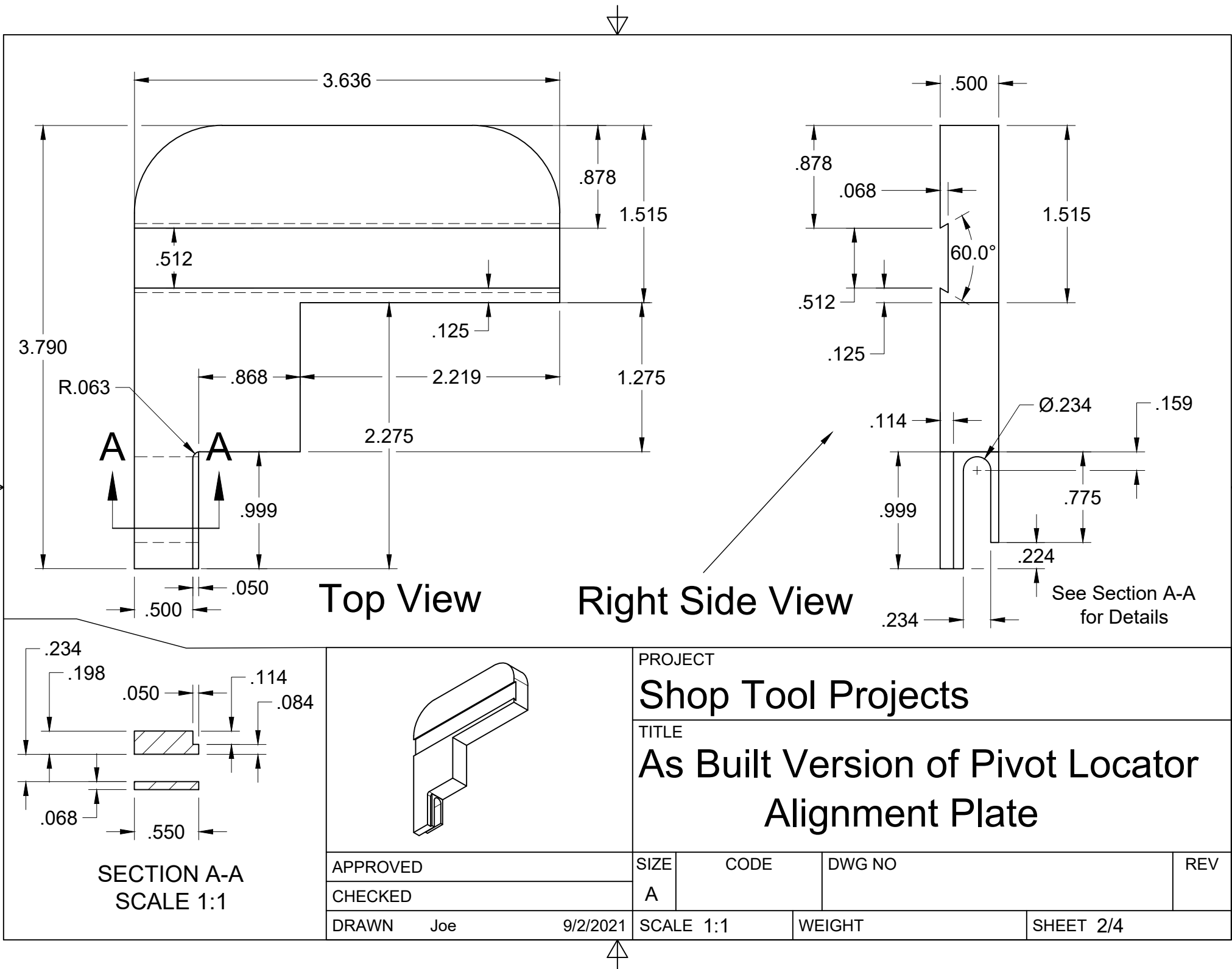


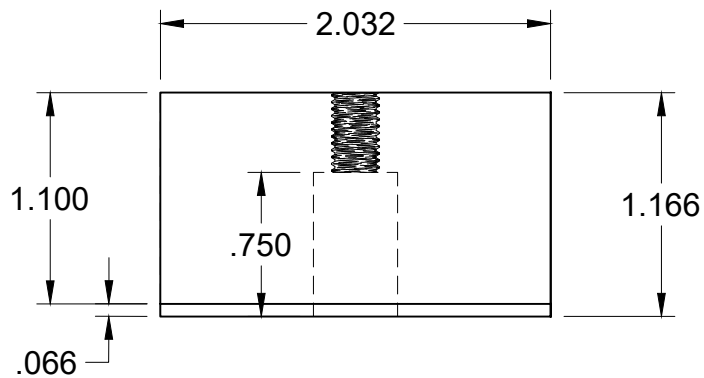
Note 1: The plunger is for securing the alignment block to the pivot locating plate via a thumbscrew. The foam plug is glued to the top of the plunger and to the bottom of the plunger cavity located in the alignment block, the foam plug is to hold the plunger in place if the alignment block is removed for whatever reason.

Note 2: After machining and installing the above components, use a test indicator to insure the locating corner is centered on the pivot point of the knuckle below the work head. After insuring the locating corner is aligned with the pivot point of the work head, mark the "0" point on the plate, then add graduations as you like.

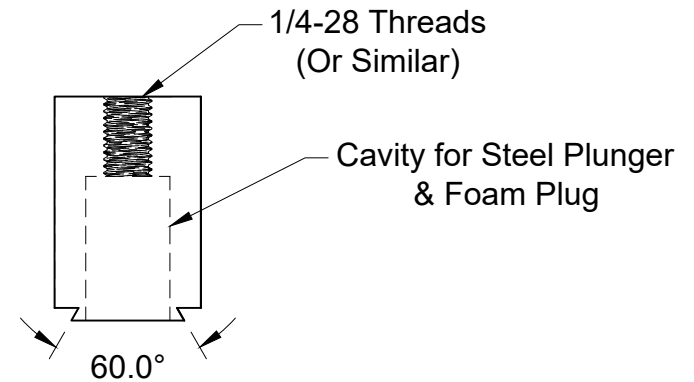
Note 3: Machine "X" axis dovetail section of the work head to match the slotting at the side of the locating plate.

Overview of Pivot Locating Tool

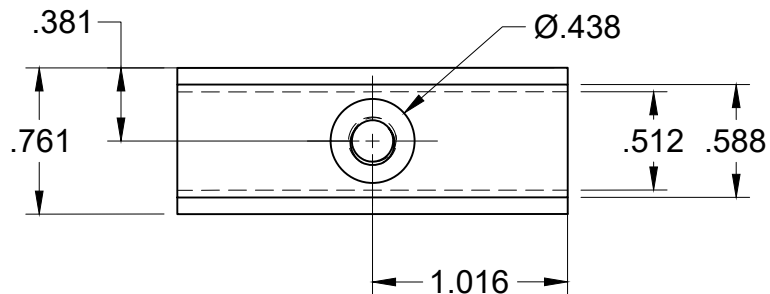




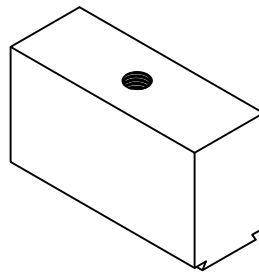
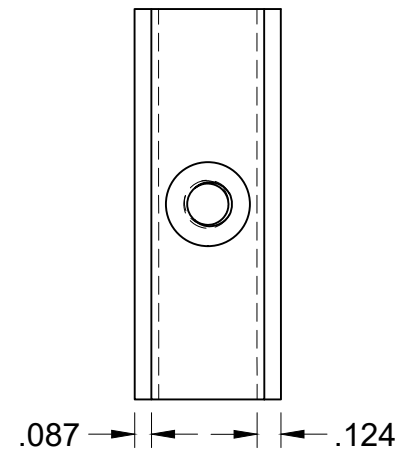
Back or Front View



Left or Right View



Bottom View



PROJECT

Shop Tool Projects

TITLE

As Built Version of Pivot Locator
Alignment Block

APPROVED

CHECKED

DRAWN

Joe

9/2/2021

SIZE

A

CODE

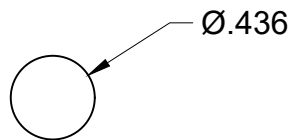
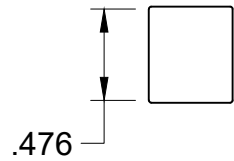
DWG NO

REV

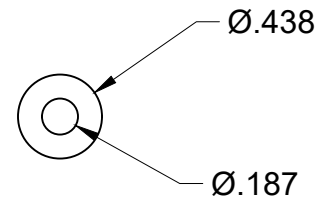
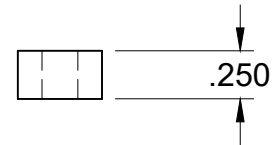
SCALE 1:1

WEIGHT

SHEET 3/4



Steel Plunger



Foam Plug

		PROJECT Shop Tool Projects			
		TITLE As Built Version of Pivot Locator Steel Plunger & Foam Plug			
APPROVED		SIZE A	CODE	DWG NO	REV
CHECKED					
DRAWN	Joe	9/2/2021	SCALE 1:1	WEIGHT	SHEET 4/4