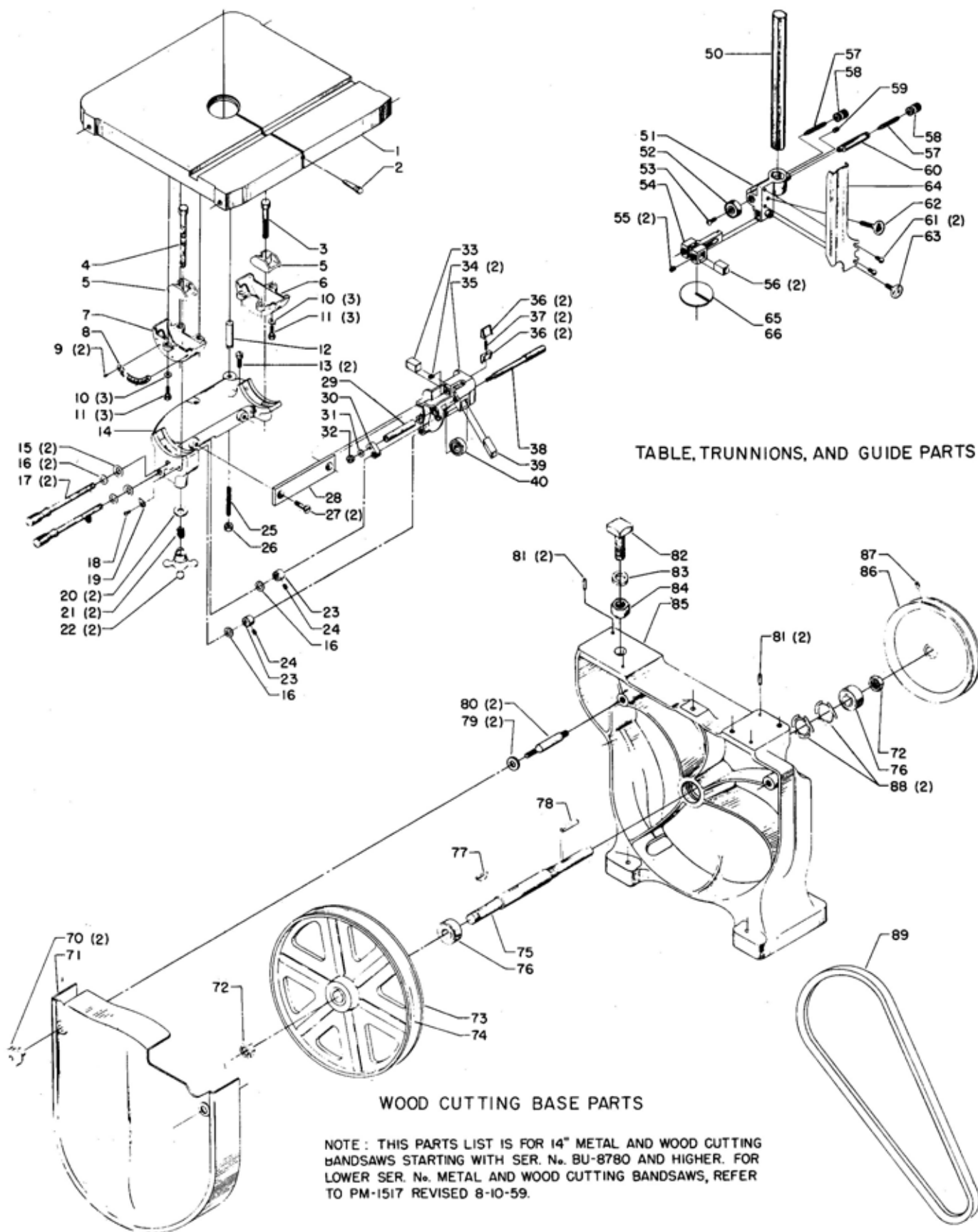




Power Tool Division  
Rockwell International

# 28-200, 28-300, 28-290, 28-380 14" WOOD AND METAL-WOOD CUTTING BAND SAWS

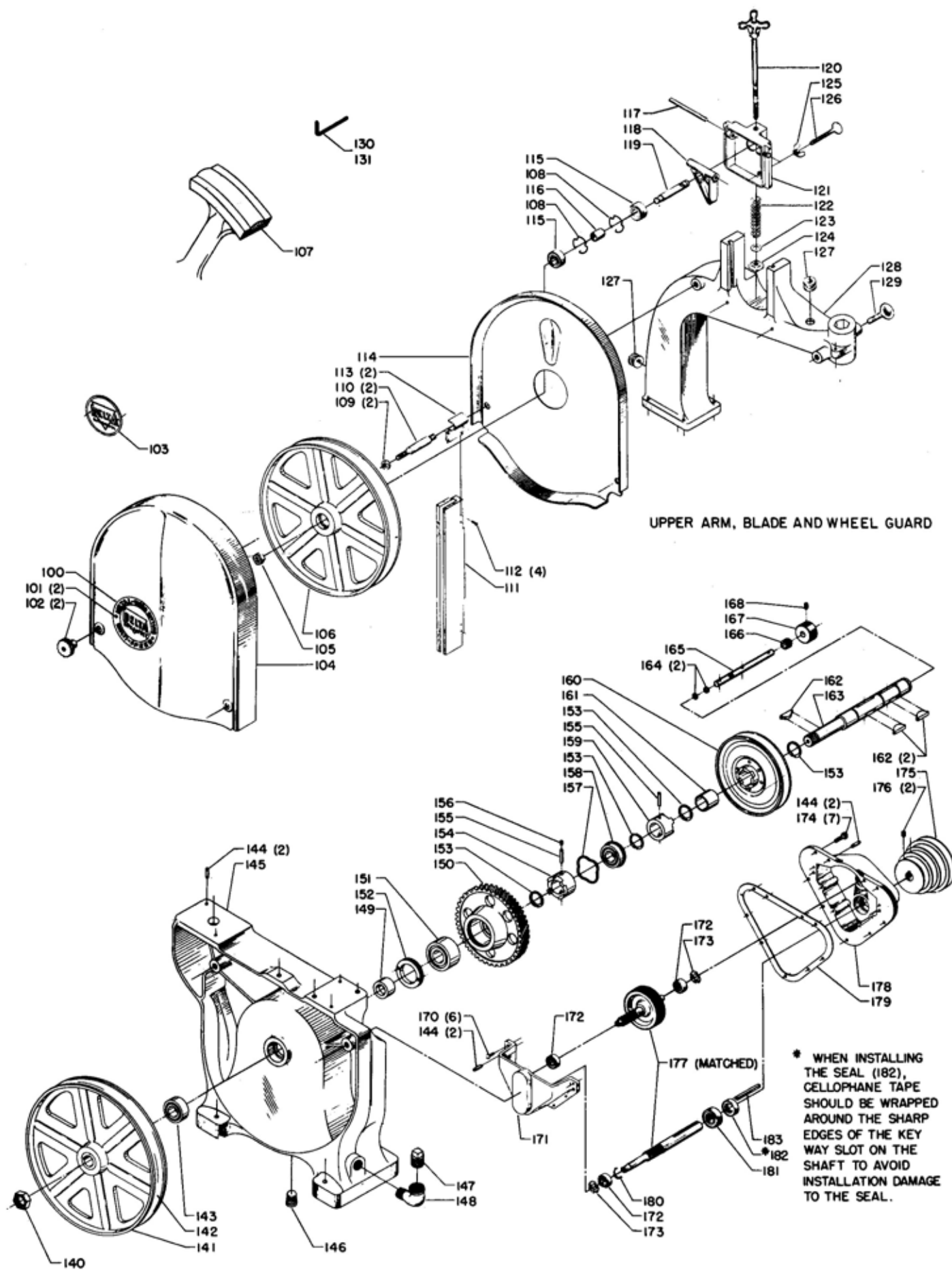
BS-2A



NOTE: THIS PARTS LIST IS FOR 14" METAL AND WOOD CUTTING BANDSAWS STARTING WITH SER. No. BU-8780 AND HIGHER. FOR LOWER SER. No. METAL AND WOOD CUTTING BANDSAWS, REFER TO PM-1517 REVISED 8-10-59.

# Replacement Parts

Ref. No.	Part No.	Description	Ref. No.	Part No.	Description
1	LBS-58	Table	*	LBS-127-S	Upper Blade Guide, Consisting of:
2	LBS-55	Tapered Table Pin	51	LBS-127	Bracket
3	SP-625	7/16-14 x 2 1/4"Hex. Hd. Cap Scr.	52	SP-5352	Bearing
4	SP-631	7/16-14 x 4"Hex. Hd. Cap Scr.	53	SP-509	1/4-20 x 1/2"Rd. Hd. Scr.
5	LBS-61	Trunnion Clamp Shoe	*	LBS-131-S	Bracket w/Guide Blocks,
6	LBS-60	Trunnion			Consisting of:
7	LBS-60-S	Trunnion, Including:	54	LBS-131	Guide Block Bracket
8	LBS-62	Scale	55	SP-225	5/16-18 x 1/4"Soc. Hd. Set Scr.
9	LBS-63	Brass Rivet	56	LBS-132	Blade Guide Block
10	SP-1603	1/4 x 9/16 x 3/64"Steel Washer	57	LBS-129	Headless Set Scr.
11	SP-612	1/4-20 x 5/8"Hex. Hd. Cap Scr.	58	LBS-130	Knurled Nut
12	LBS-4	Removable Base Table Stop	59	SP-201	5/16-18 x 5/16"Soc. Hd. Set Scr.
13	SP-702	5/16-18 x 3/4"Fil. Hd. Cap Scr.	60	LBS-128	Hex. Shaft
14	LBS-10	Trunnion Support Bracket	61	SP-514	1/4-20 x 3/8"Rd. Hd. Scr.
15	BM-45	13/32 Spring Washer	62	SP-1528	5/16-18 x 1"Thumb Scr.
16	LBS-170	25/64" Fiber Washer	63	SP-1520	5/16-18 x 1/2"Thumb Scr.
17	LBS-167-S	Adjusting Screw w/ Knob	64	LBS-180	Sliding Blade Guard
18	SP-552	#10-32 x 5/16 Rd. Hd. Scr.	65	LBS-56	Aluminum Insert ( Wood
19	SBS-46	Pointer			Cutting Model)
20	SP-1606	7/16 x 1 x 5/64"Steel Washer	66	LBS-265	Steel Insert ( Metal Cutting
21	NCS-33	Spring			Model)
22	NCS-32	Hand Knob	70	LBS-282	Knob
23	LBS-169-S	Set Collar, Including:	71	LBS-186	Lower Wheel Guard
24	SP-101	1/4-20 x 1/4"Headless Set Scr.	72	LBS-86	Hex. Jam Nut
25	SP-105	5/16-18 x 2"Headless Set Scr.	73	LBS-304-S	Lower Wheel, Including:
26	SP-5435	5/16"-18 Hex. Jam Nut	74	LBS-81	Tire
27	SP-408	5/16-18 x 3/4"Flat Hd. Scr.	75	LBS-85	Shaft
*	LBS-160-S	Lower Blade Guide, Consisting of:	76	SP-5338	Bearing
28	LBS-165	Rail for Lower Guide Bracket	77	SP-2603	#705 Hi-Pro Key
29	LBS-164	Spacing Sleeve	78	SP-2650	3/16 x 3/16 x 1 3/8"Key
30	LBS-162	Adj. Link for Support Bracket	79	BM-46	25/64" Steel Washer
31	SP-1603	1/4 x 9/16 x 3/64"Stl. Washer	80	LBS-283	Stud
32	SP-1029	1/4"-20 Hex. Nut	81	SBS-8	Tapered Dowel Pin
33	LBS-132	Blade Guide Block	82	SP-2352	3/4-10 x 2"Sq. Hd. Bolt
34	SP-225	5/16-18 x 1/4"Soc. Hd. Set Scr.	83	SP-1707	3/4" Lockwasher
35	LBS-160	Support Bracket for Lower Guide	84	SP-1027	3/4"-10 Hex. Nut
36	LBS-161	Wedge for Lower Guide Bracket	85	LBS-5	Base
37	LBS-166	Coil Spring	86	Cat. #5600-C	Pulley, Including:
38	LBS-163	Shaft for Lower Support Bearing	87	SP-201	5/16-18 x 5/16"Soc. Hd. Set Scr.
39	LBS-153	Angle Guide Block	88	SP-7353	Bearing Loading Spring
40	SP-5352	Bearing	89	Cat. #49-173	V-Belt
50	LBS-126	7/8 x 10" Hex. Guide Post	*	Cat. #1034	Band Saw Blade
			*	Not Shown	



METAL-CUTTING BASE PARTS

# Replacement Parts

Ref. No.	Part No.	Description	Ref. No.	Part No.	Description
100	LBS-284	Nameplate ( Metal Cutting Model )	146	SP-2438	1/8" Pipe Plug
101	LBS-63	Brass Rivet	147	SP-2437	1/2" Pipe Plug
102	LBS-282	Knob	148	SP-3545	1/2 x 1/2 x 90° Street Elbow
103	LBS-233	Nameplate ( Wood Cutting Model )	149	LBS-293	Spacer
104	LBS-187	Upper Wheel Guard	•	LBS-292-S	Gear, Consisting of:
105	SP-1227	1/2-20 Hex. Jam Nut	150	LBS-292	Gear
106	LBS-290-R	Upper Wheel, Including:	151	SP-5397	Bearing
107	LBS-81	Tire	152	LBS-299	Retainer Nut
108	LBS-108	Bearing Retainer	153	SP-7420	Retaining Ring
109	BM-46	25/64" Steel Washer	154	LBS-294	Clutch
110	LBS-283	Stud	155	SP-2732	5/32 x 1" Roll Pin
111	LBS-191-S	Wooden Guard, Including:	156	901-04-150-9417	#10-32 x 3/16 Soc. Hd. Set Scr.
112	SP-2006	#5 x 1/2 Rd. Hd. Wood Scr.	157	LBS-301	Washer
113	LBS-179	Guard Mounting Bracket	158	SP-5399	Bearing
114	LBS-189	Upper Wheel Guard Pan	159	LBS-295	Clutch
115	SP-5336	Bearing	160	LBS-296-S	Drive Pulley, Including:
116	LBS-109	Spacing Sleeve	161	LBS-303	Bushing
•	LBS-102-S	Sliding Bracket, Consisting of:	162	SP-2640	#808 Hi-Pro Key
117	LBS-103	Steel Pin	163	LBS-291	Shaft
118	LBS-101	Upper Wheel Shaft Hinge	164	SP-3695	"O" Ring
119	LBS-110	Upper Wheel Shaft	165	LBS-297	Shifter Rod
120	LBS-104-S	Blade Tension Screw with Star Wheel	166	LBS-300	Threaded Bushing
121	LBS-102	Upper Wheel Sliding Bracket	167	LBS-298	Knob
122	LBS-105	Coil Spring	168	SP-261	5/16-18 x 5/16" Soc. Hd. Set Scr.
123	LBS-112	13/32" Fiber Washer	170	SP-559	#10-32 x 1/2 Rd. Hd. Scr.
124	LBS-111	Sq. Nut	171	LBS-274	Cover
125	SP-1403	5/16-18 Wing Nut	172	SP-5375	Bearing
126	LBS-106	5/16-18 x 2 1/4" Thumb Scr.	173	SP-7354	Bearing Loading Spring
127	LBS-27	Rubber Grommet	174	SP-626	1/4-20 x 3/4" Hex. Hd. Cap Scr.
128	LBS-26	Upper Frame Arm	175	Cat. #720	Pulley, Including:
129	SP-1531	7/16-14 x 1 1/4" Thumb Scr.	176	SP-201	5/16-18 x 5/16" Soc. Hd. Set Scr.
130	Cat. #194	5/32" Hex. Wrench	177	LBS-272-S	Intermediate Gear w/Shaft (Matched)
131	Cat. #1535	3/16" Hex. Wrench	178	LBS-275	Gear Housing
140	BS-224	L.H. Hex. Nut	179	LBS-205	Gasket
141	LBS-289-S	Lower Wheel, Including:	180	SP-7047	Retaining Ring
142	LBS-81	Tire	181	SP-5374	Bearing
143	SP-5398	Bearing	182	SP-5253	Seal
144	SBS-8	Tapered Dowel Pin	183	SP-2651	3/16 x 3/16 x 2 1/8" Key
145	LBS-287	Base	•	LBS-279	7/16 x 1 1/4 x 5/16" Rubber Washer
			•	426-03-017-0002	3/4 to 1/2" Reducing Bushing
			•	426-03-017-0004	3/4 to 5/8" Reducing Bushing
			•	Cat. #1062	Band Saw Blade
			•	Cat. #49-111	V-Belt (Matched Set of 2 Belts)
			•	Not Shown	