

nMotion Mach3 USB Motion Card Installation Manual

Features:

- Fully supporting all Mach3 versions, including the Mach3 R3.043.066 version.
- Supporting Windows series, including Windows2000/XP/Vista/Win7/Win8/Win10.
- No need to install any USB drivers, it can be used after plugging in the computer.
- USB bus is the use of magnetic coupling isolation, isolation of real value, different from the general control card optocoupler input and output, do high reliability, absolute guarantee the safety of the computer USB. At the same time to ensure that the strong anti-interference ability of EMC.
- The single chip, the system stability is more streamlined, multi chip processing generally incomparable
- Dual core ultra - high speed CPU (the maximum single core frequency 204MHz), operation processing ability has great redundancy, and ensure the realization of four axis linkage under 500KHz frequency of the pulse output, 6 axis pulse output frequencies up to 300kHz, connected to the servo / step
- Motion control buffer size can be set and ensure the fast interpolation cycle can stable operation, computer running overload can also smooth operation and interpolation cycle adjustable, can adapt to a variety of different needs.
- Has 16 input port, input interface more simple, port of wet and dry contact can be, wiring is simple, dry contact method for as long as the external connected to a physical switch to the wire can be, all 16 input port are indication signal, for low power usually indicating lamp is bright, debugging simple and clear.
- With 8 output ports, a single output drive capability of 500mA, can be directly driven by DC relay.
- The PWM speed output port can be set, the frequency of PWM, pulse width 0~1000 continuously adjustable.
- With the function of the speed, the actual speed of the spindle in the Mach3 interface, real-time display, accurate and stable measurement.
- With 256 bytes of NVRAM space, can save the coordinates of the 6 axes, the next power without the need to find the mechanical origin.
- The circuit board is made by the engineer, the design level is clear at a glance.

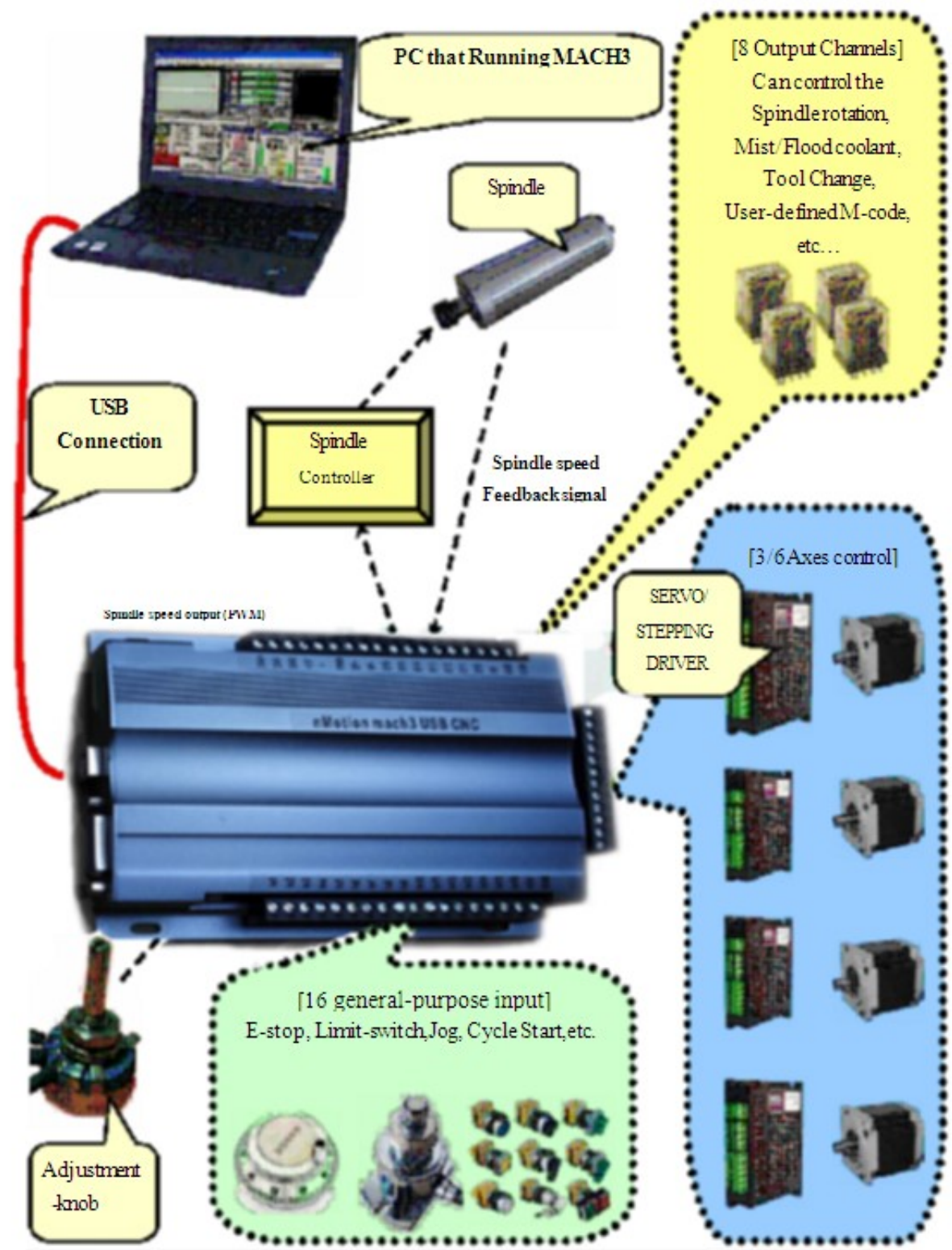
Revisions List

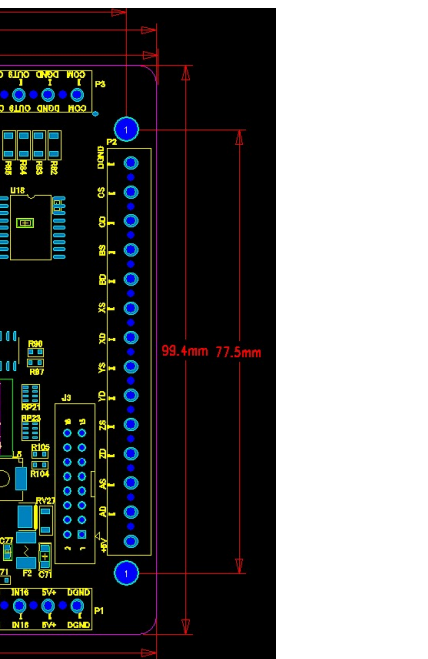
● Basic connection diagram (an Overview)	3
● Mechanical dimensions diagram.....	5
● Prepare Mach3 software	7
A. Installing the motion card plug-in.	10
B. Setup for Mach3.....	11
● Hardware installation of motion control card	14
8 way control output pin position diagram	18
External power knob	19
Spindle speed PWM analog output	21
Probe connection	25
● MPG Setting	27
Software configuration.....	28
MPG soft mode:	29
MPG hard mode	30
● Using NVRAM	31

- **Basic connection diagram (an Overview)**



nMotion mach3 USB CNC controller





● Prepare Mach3 software



This card is a Mach3 USB interface 3/6 axes external motion card.



The latest version of Mach3 official website:

<http://www.machsupport.com/downloads.php>



Mach3 download: as shown below:



[Home](#) | [Downloads](#) | [Purchase](#) | [Support](#) | [Resources](#)

Downloads

For previous versions of Mach and LazyCam, XML's, and other Extra Information: [Click Here](#)

(Some of the older files are linked directly from the FTP server in order to avoid redundancy. If your download does not start immediately, please give it a few seconds - It's probably trying to contact/login to the FTP server.)

Mach

Mach3 is the flagship of the ArtSoft products. It is released in two versions: a Lockdown version, and a Development version. The Lockdown is a stable, static release recommended for new users, or people trialing the software. The Development version contains developing features and is released quite often so people can obtain new (but untested) features and capabilities. Both releases are limited to 100 lines of Gcode until licensed. Mach3 has a limit of 10,000,000 lines of Gcode even after licensing.

You must use a Desktop PC running a 32-bit version of Windows if you are using the Mach3 Parallel Port Driver. Laptops are not supported because the power saving features of the chipsets disrupt the pulse stream. Mach3 will only be supported on laptops running an external motion controller, such as one of those found on the [Plugins](#) page.

Lockdown:

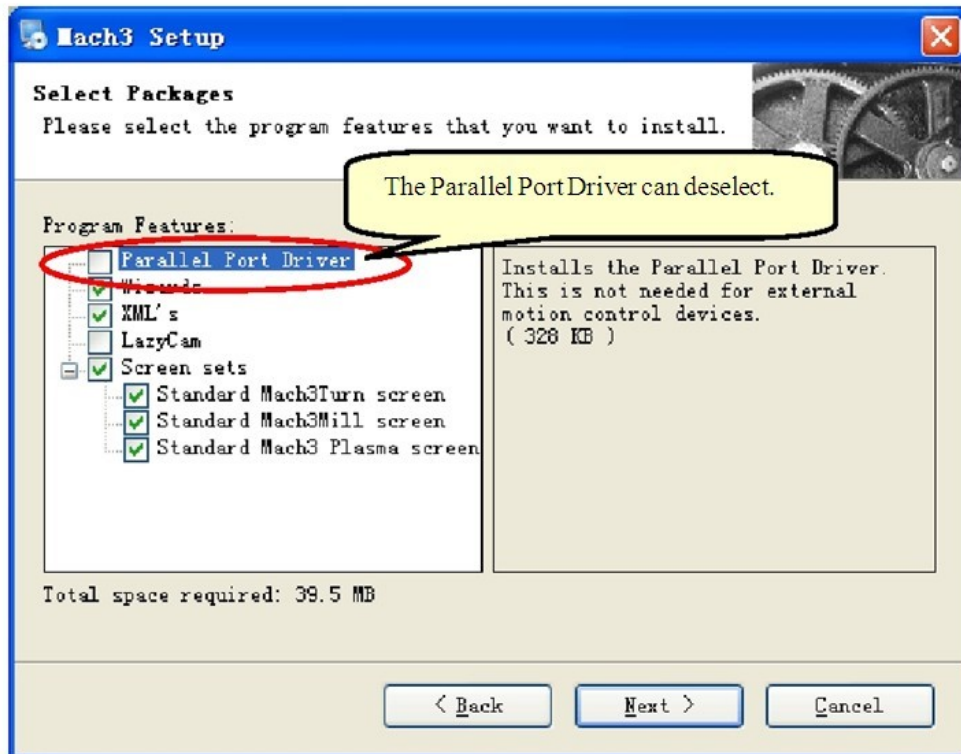
[Mach3 R3.042.040](#)

[Mach3 Changelog](#)



Installation the Mach3:

The Parallel Port Driver does not require.



Installation the software of the USB motion card

This USB motion card does not need install any USB driver, Windows2000/Xp/Vista/Windows7 can directly identify.

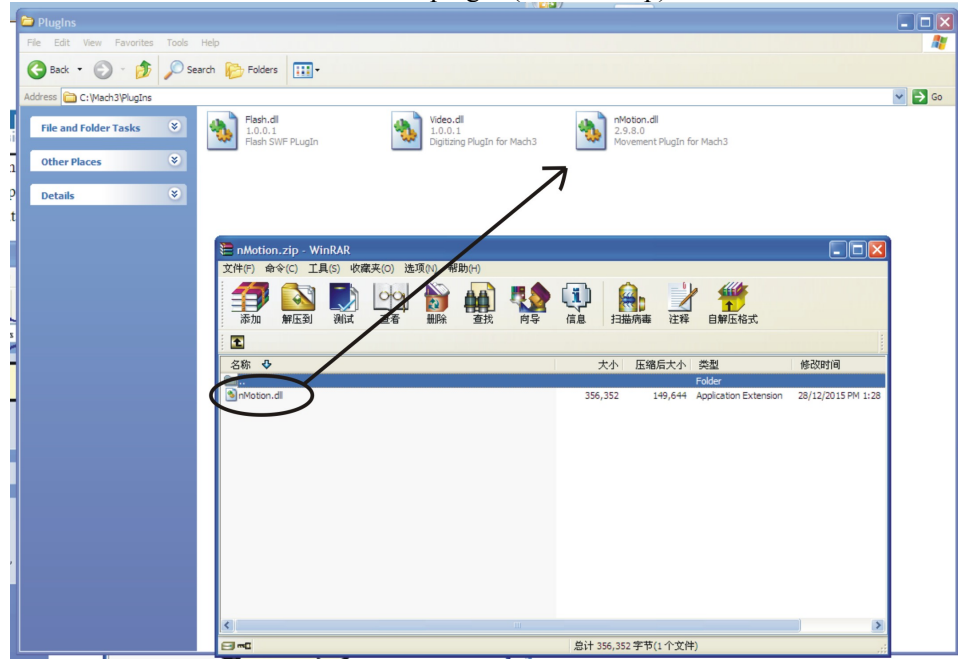
1. Connecting the USB cable to the PC and the motion card.



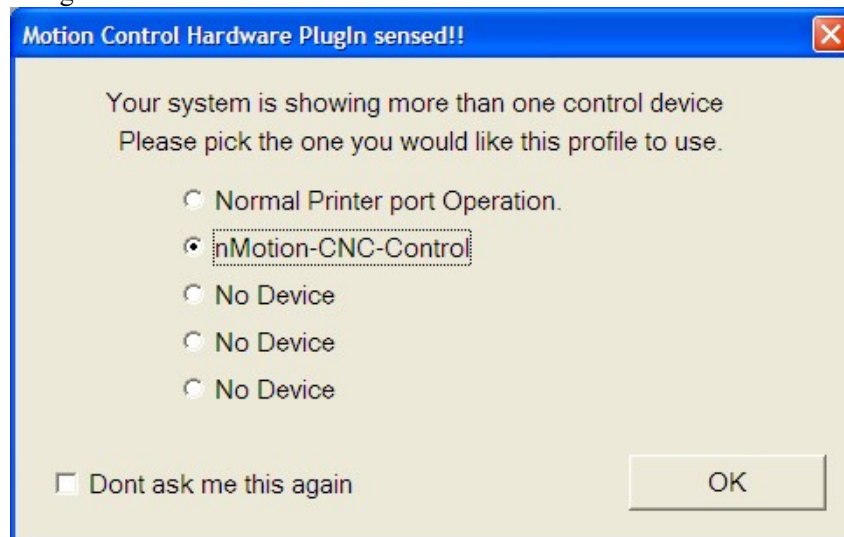
A. Installing the motion card plug-in.

Unzip the usbmove.zip, copy or drag usbmove.dll into your Mach3\PlugIns folder.

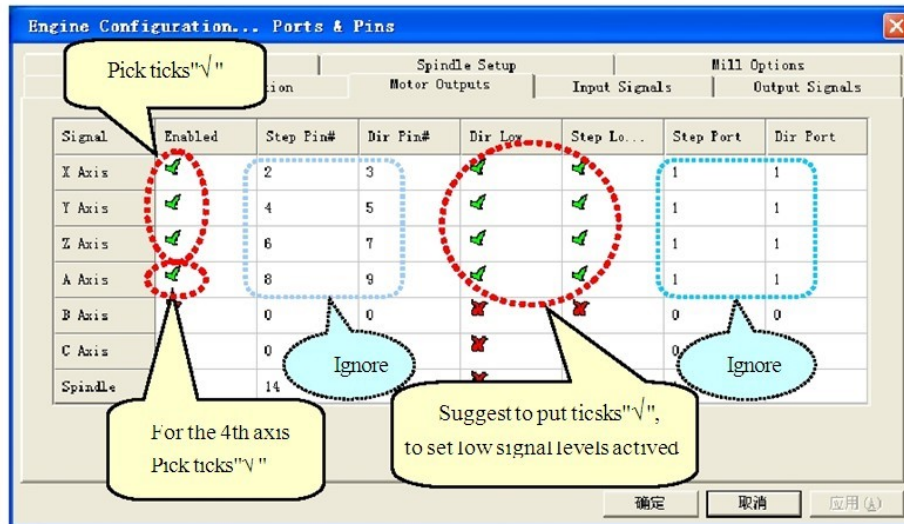
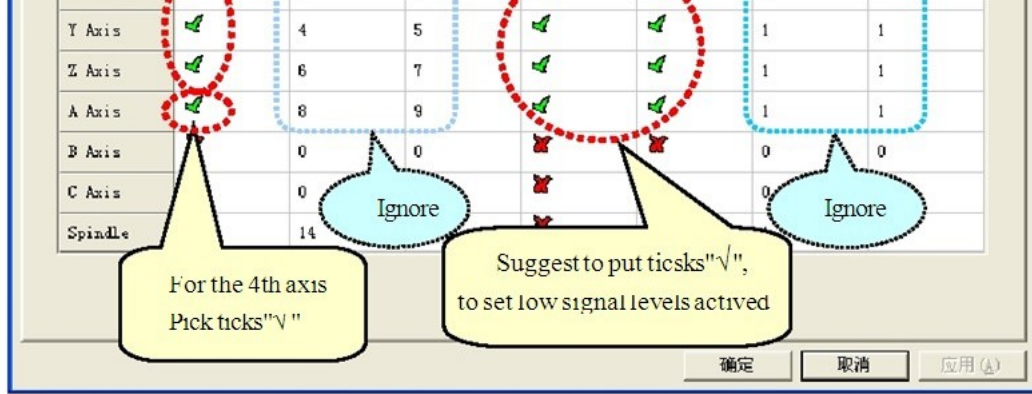
Note: Download the latest version of plug-in(nMotion.zip)



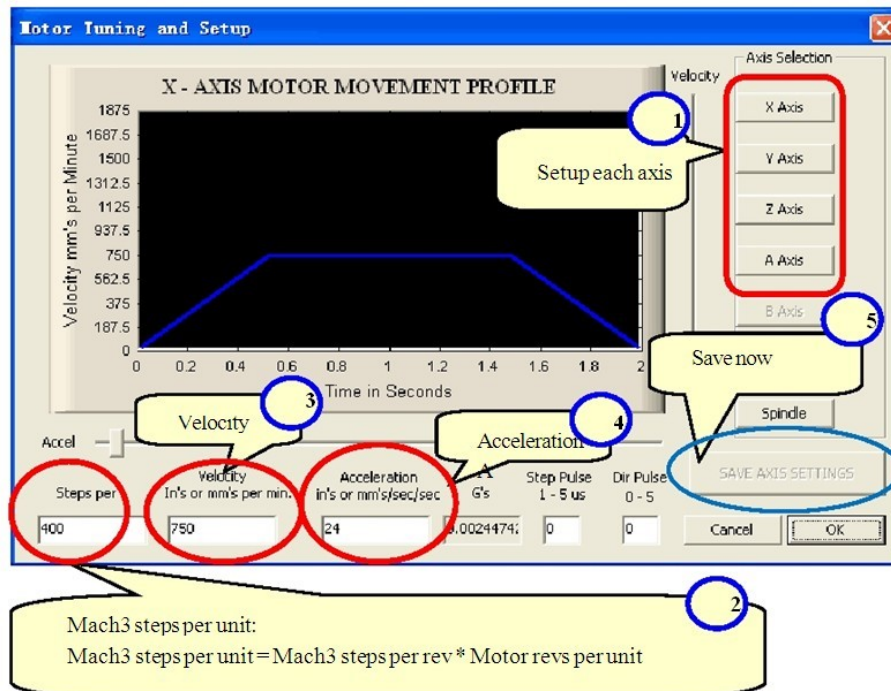
Start the Mach3 software, a dialogue of "Motion Control Hardware PlugIn sensed!!" is shown. Please select the "Mach3-USB-Motion-Card" you can also check "Don't ask me , this again".



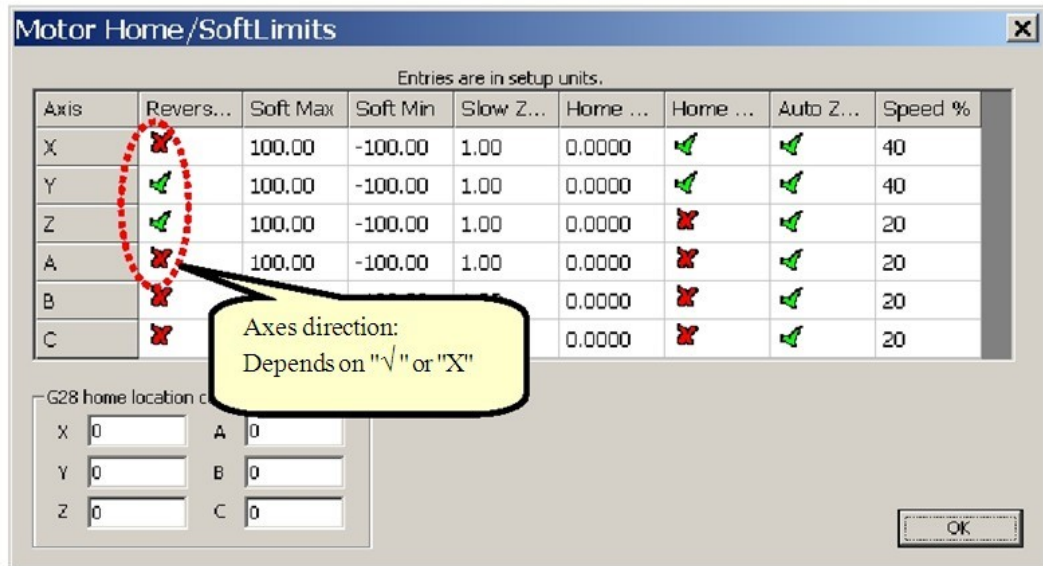
B.



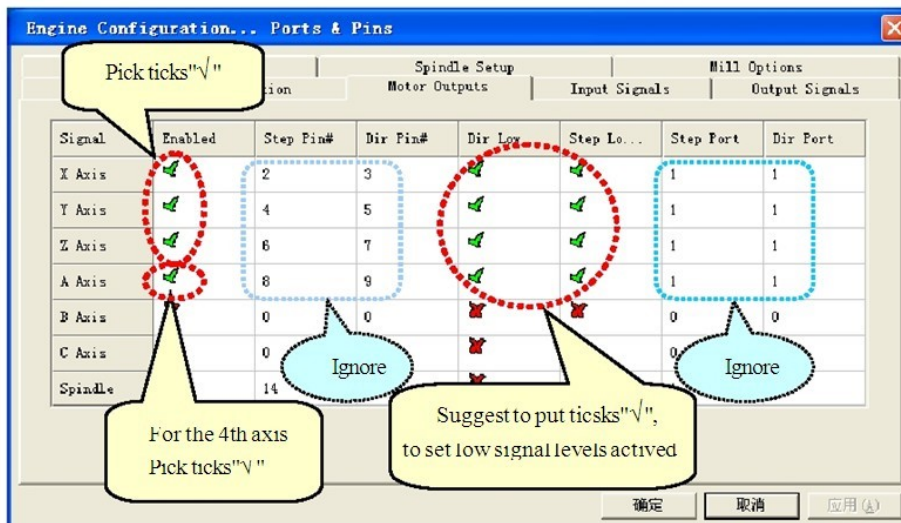
Motor config like this:(config=>Motor Tuning)



The Mach3 Menu => Config => Homing/Limits dialog Axes direction, depends on the "Reversed".



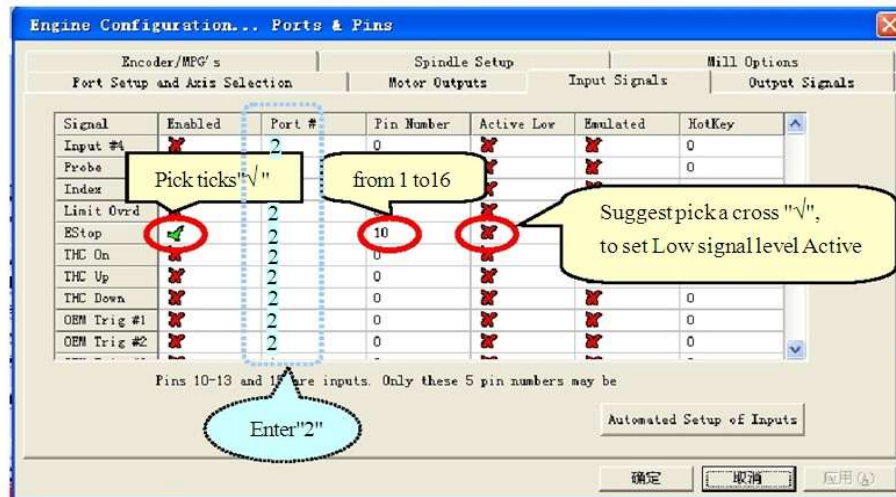
Or you can change the direction on this page: Dir Low select "X" or "√"



b) Setup the input singles.

There are 16 general-purpose input channels. The channels number is from 1 to 16, Port Number is 2.

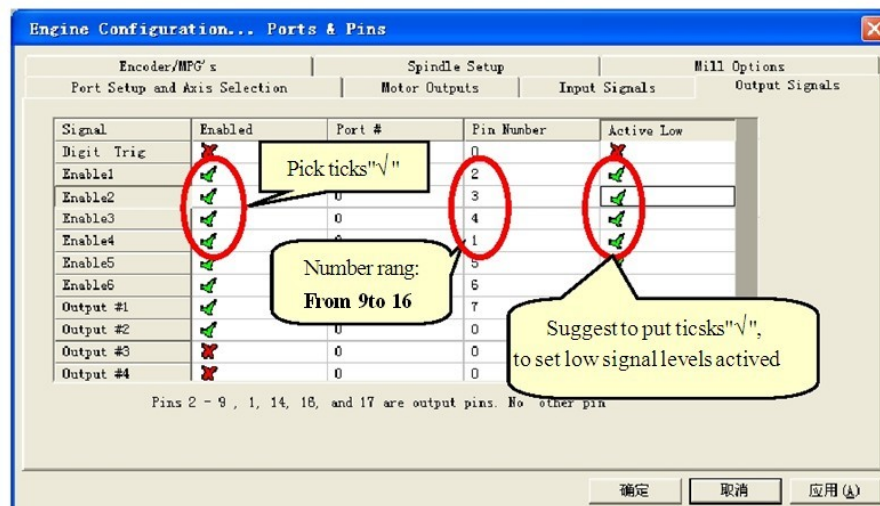
Suggest Active Low = "√" (Set Low signal Level for Inputs)



c) Setup the Output signals.

There are 8 general-purpose (open-drain) output channels, The channels number is from 9 to 16. Port Number is 2.

Suggest Active Low = "√" (Set Low signal Level for outputs)



● Hardware installation of motion control card

PIN function description

6 Axis Output Port

Index	Pin Name	Function	Electrical	note
1	5V+	5V DCDC output	5V Power output	Supply for Pluging and
2	AD	A axis Dir	OC OutPut	Connect to A axis driver
3	AS	A axis Stop	OC OutPut	Connect to A axis driver
4	ZD	Z axis Dir	OC OutPut	Connect to Z axis driver
5	ZS	Z axis Stop	OC OutPut	Connect to Z axis driver
6	VD	V axis Dir	OC OutPut	Connect to V axis driver
7	VS	V axis Stop	OC OutPut	Connect to V axis driver
8	XD	X axis Dir	OC OutPut	Connect to X axis driver
9	XS	X axis Stop	OC OutPut	Connect to X axis driver
10	YD	Y axis Dir	OC OutPut	Connect to Y axis driver
11	YS	Y axis Stop	OC OutPut	Connect to Y axis driver
12	CD	C axis Dir	OC OutPut	Connect to C axis driver
13	CS	C axis Stop	OC OutPut	Connect to C axis driver
14	GND	Stop Dir GND	GND	GND

16 input terminals (Port Input) pin function description

index	Pin Name	Function	Electrical	Note
1	INCOM	Input public side, the power supply is positive		INCOM is short connected to the
2	IN1	Input Port	Input 0~36V, NPN or PNP can and has a public side, common cathode anode can, a bidirectional input optocoupler, to 5V sensor for design reference, 12V sensor need 1K resistance string, 24V sensor requires 2K resistor string	In the MACH3 menu "Configuration" = >"port and pin" = > "Input Signals" in the allocation of functions Mach3 in the port number (Number Port) for 2, the pin number (Number Pin) for the 1~16 number.
3	IN2			
4	IN3			
5	IN4			
6	IN5			
7	IN6			
8	IN7			
9	IN8			
10	IN9			
11	IN10			
12	IN11			
13	IN12			
14	IN13			
15	IN14			
16	IN15			
17	IN16			
18	5V+	5V+	5V Power output	
19	DGND	Digital signal ground wire	Digital ground , and 24V power supply ground is isolated	

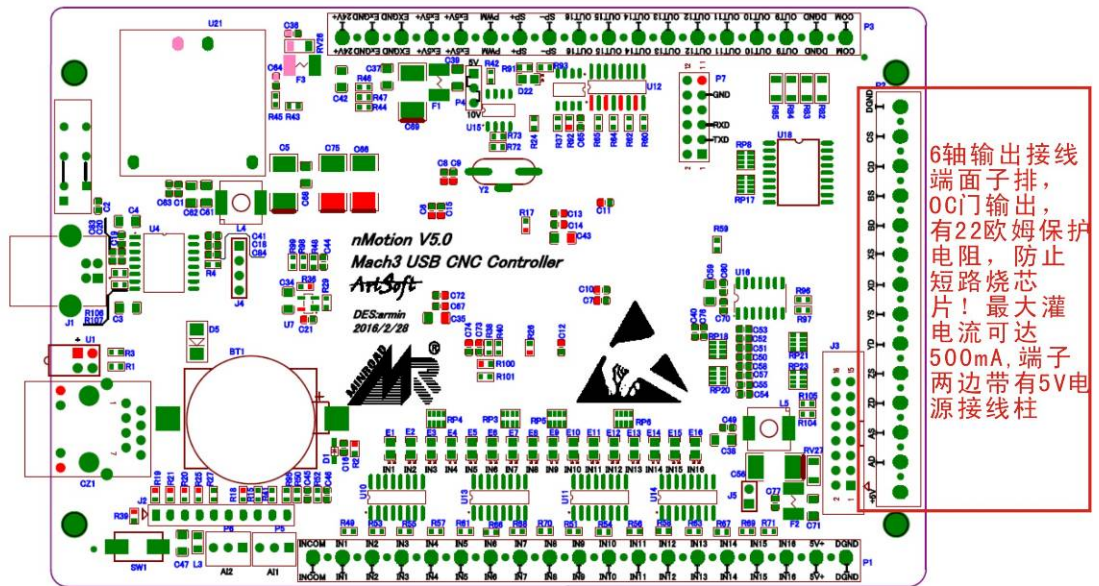
Output terminal (Port Out) pin function description

index	Pin Name	Function	Electrical	Note
1	24V+	18~36V DC Power	Minimum power	Power input terminal
2	EGND	18~36V DC GND	Minimum power 5W	
3	EGND	Signal ground	Input power EGND and control output DGND are isolated	Input power EGND and control output DGND are isolated
4	E5V+	output out:5V	max:600mA	Output from 24V to 5V
5	E5V			linear power supply
6	PWM	PWM pulsewidth	OC, 50V/200mA	The spindle speed output, output can be 0~5V or
7	SD+	Speed Signal +	6~15mA	LED Positive input
8	SD-	Speed Signal -	6~15mA	LED Negative input
9	O16	general-purpose (open-drain) output channels	OC (open-drain), 50V /50mA	In the MACH3 menu "Configuration" =>"port and pin" => "Output Signals"
10	O15			
11	O14			
12	O13			
13	O12	general-purpose (open-drain) output channels	OC (open-drain), 50V /500mA	Configuration function, port number (Number Port) for 2, pin number (Number Pin) for the 8~16 number.
14	O11			
15	O10			
16	O9			
17	DGND	Digital signal ground	Digital signal ground	Digital signal ground
18	COM	Darlington array	500mA Max	General purpose output end to

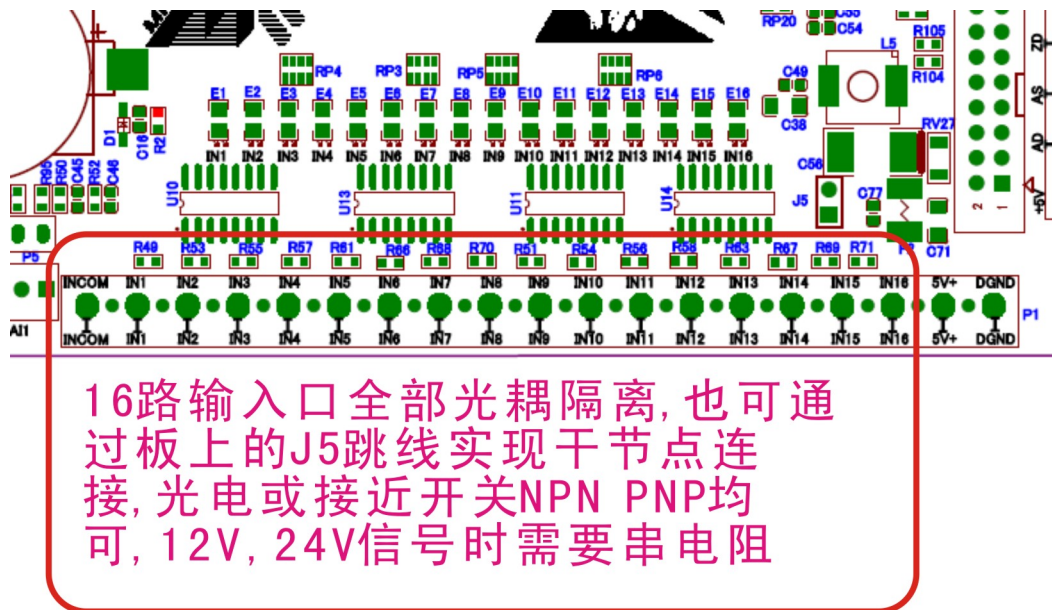
The card supplied by USB, has installed a power module, no external power supply, the maximum output power of up to 1A.

All output, including 6 axis pulse / output / control output / spindle speed output, USB connection after the default output impedance. In the Mach3 after the start level is controlled by Mach3, suggested that all the output signal in Mach3 is set to low level effective.

nMotion mach3 USB CNC controller

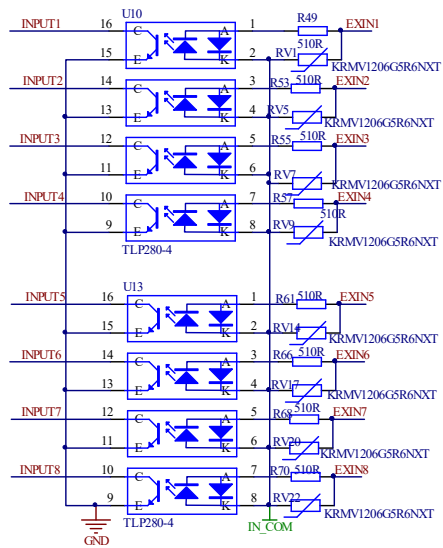


Input port wiring instructions



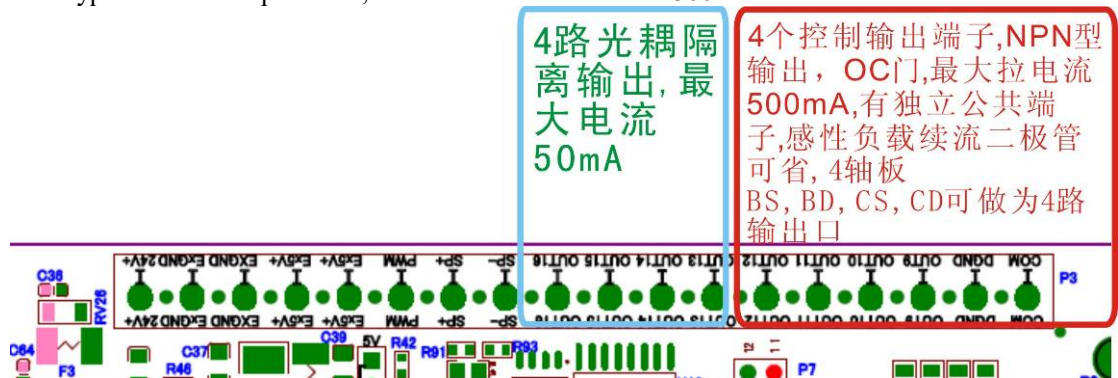
Principle diagram of input port

nMotion mach3 USB CNC controller

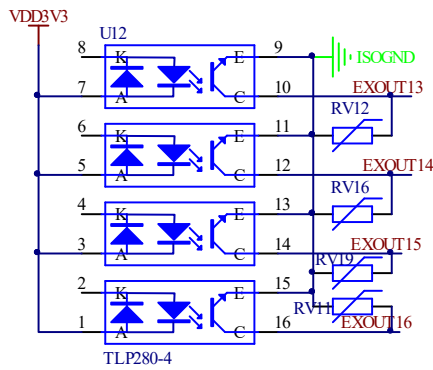


8 way control output pin position diagram

NPN type low level output mode, the maximum drive current 500mA.

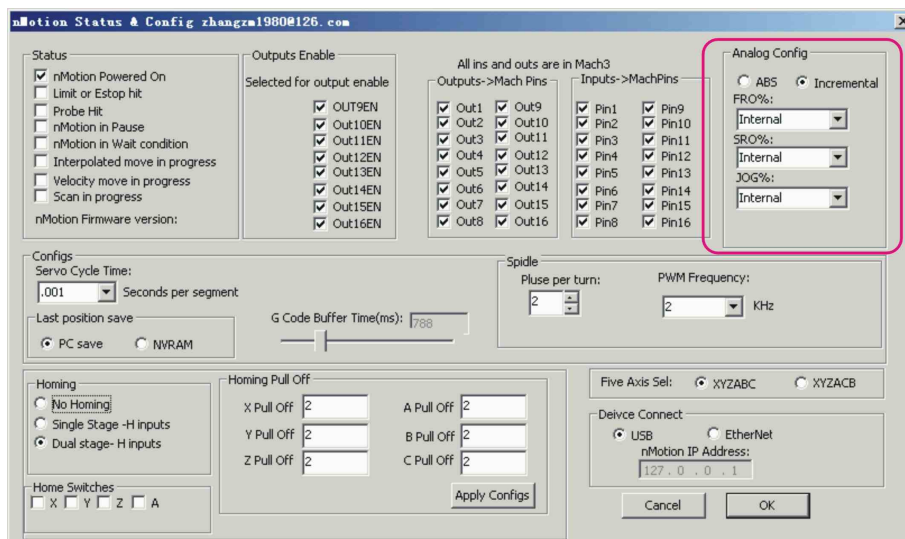


Principle diagram of Isolate Output



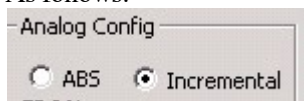
External power knob

Two AI input port, the voltage input range of 0~3.3V, can be used to set the rate of FRO/SRO/JOG
Mach3 menu “Plugins Config”=>”Config”, enter “PlugIn Control and Activation”.



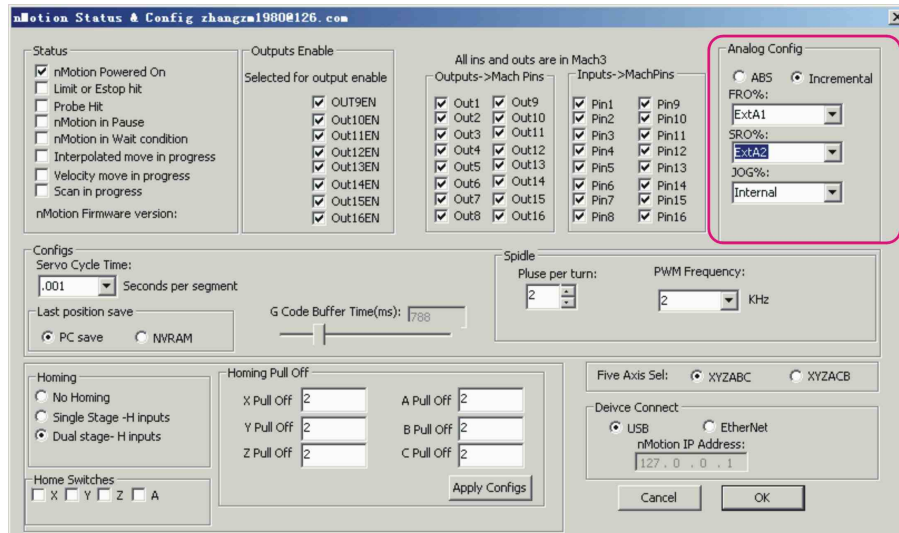
There are two kinds of application modes of analog quantity input: 1 absolute value model, 2 increment value model

As follows:

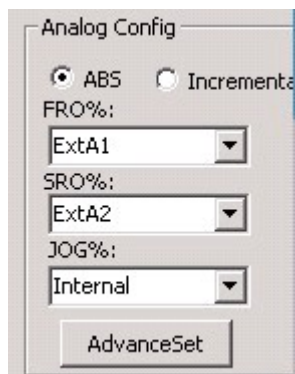


- The absolute value of FRO%, SRO%, Jog% under the mode of the value of a linear relationship with the AI, AI level is higher, the greater the value of the corresponding rate.
- Incremental value mode FRO%, SRO%, Jog% value with the relative change in volume changes, mainly referring to the last moment of external AI voltage value and present current AI voltage value comparison, if the voltage is relatively higher, corresponding to the rate value is increased, otherwise reduce.
- General incremental value model.
- FRO% (feed rate of F). SRO% (spindle speed ratio), Jog% (dynamic magnification) set external rate "ExtA1" or "ExtA2"

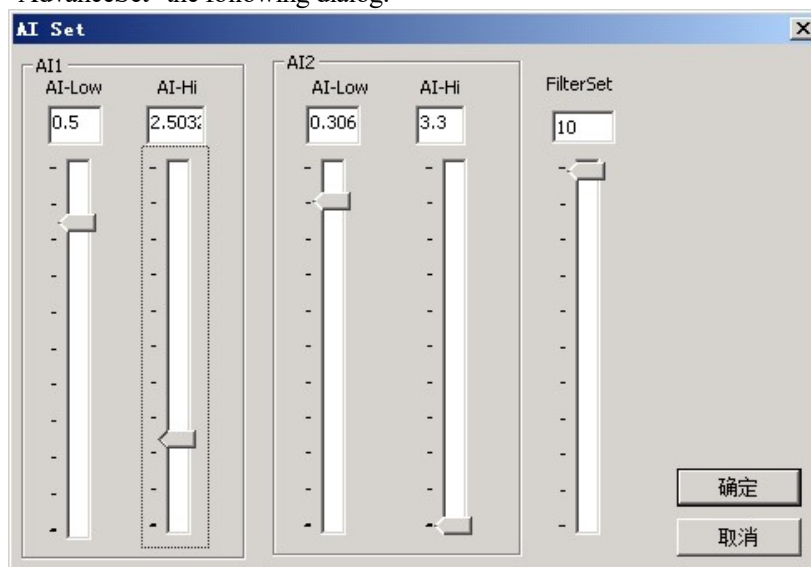
nMotion mach3 USB CNC controller



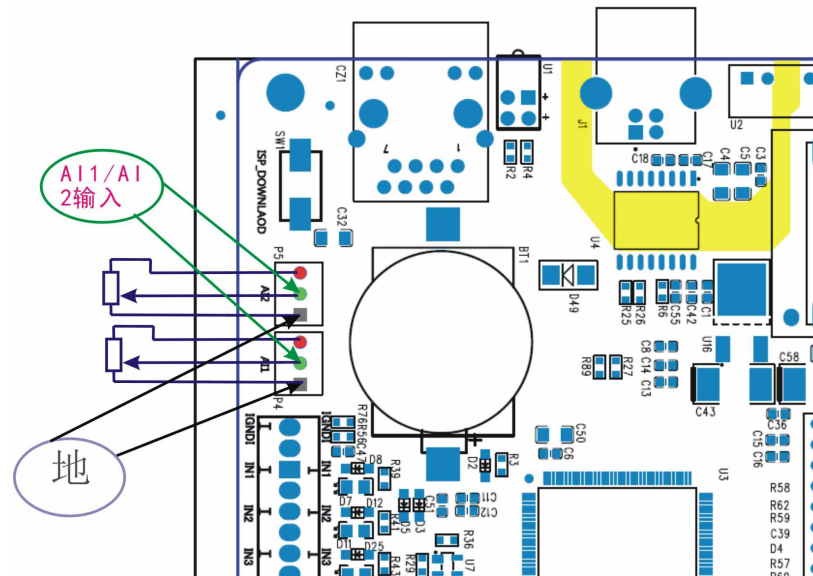
After the completion of the configuration, click "OK". Rotation rate knob Mach3 interface corresponding to the SRO%, FRO% numerical immediately change.
Rotation rate knob, Mach3 interface corresponding to the Jog Rate% Slow value immediately change.



In absolute value mode will be more of a button, used to set the initial voltage of low level and high level at the end of the voltage, such as external input voltage range is 0.5V~2.5V, to rate value by the change of 0-300, low starting level voltage is 0.5V, the high level end voltage 2.5V. Click on the "AdvanceSet" the following dialog:

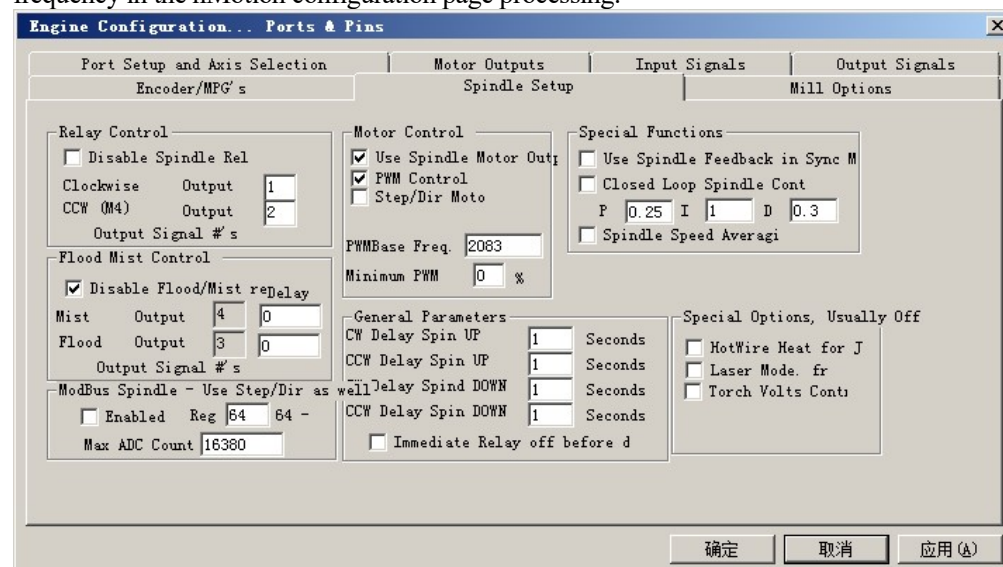


And a filtering coefficient, filter coefficient is small, rate value response faster, smoothing less, whereas response is slower, the change was more smooth. Generally do not move, set to 10~20 can be. AI input port as shown below, not marked red terminal 4.4V about power, this power only potentiometer power supply, please don't external use.



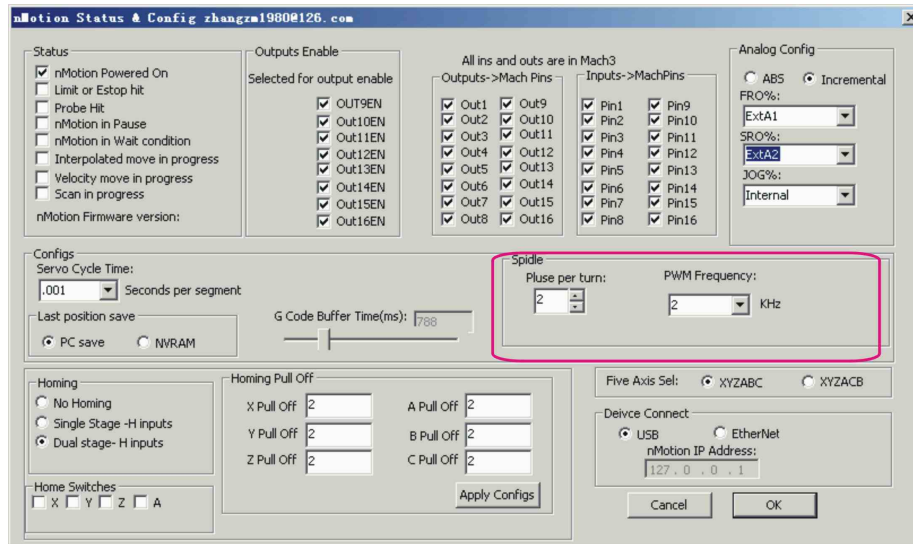
Spindle speed PWM analog output

Click on the main menu "config" => "port and pins into the spindle spindle setup settings, tick the" use spindle motor output. In Freq. PWMBase, there is no need to fill in the required frequency. PWM frequency in the nMotion configuration page processing.

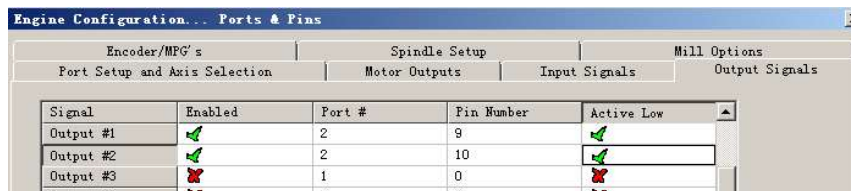


Spindle PWM (pulse width modulation output frequency in the Mach3 menu Config=>Config plugins into plugin control and selection of activation nMotion card to control the, click on the "config" after USB card configuration dialog.

nMotion mach3 USB CNC controller



spindle relay configuration



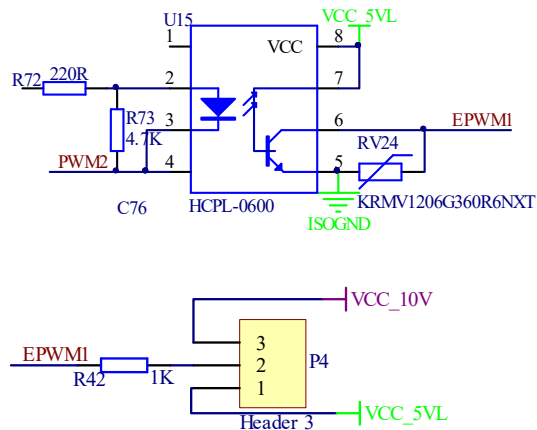
Phase configuration of spindle speed control signal PWM



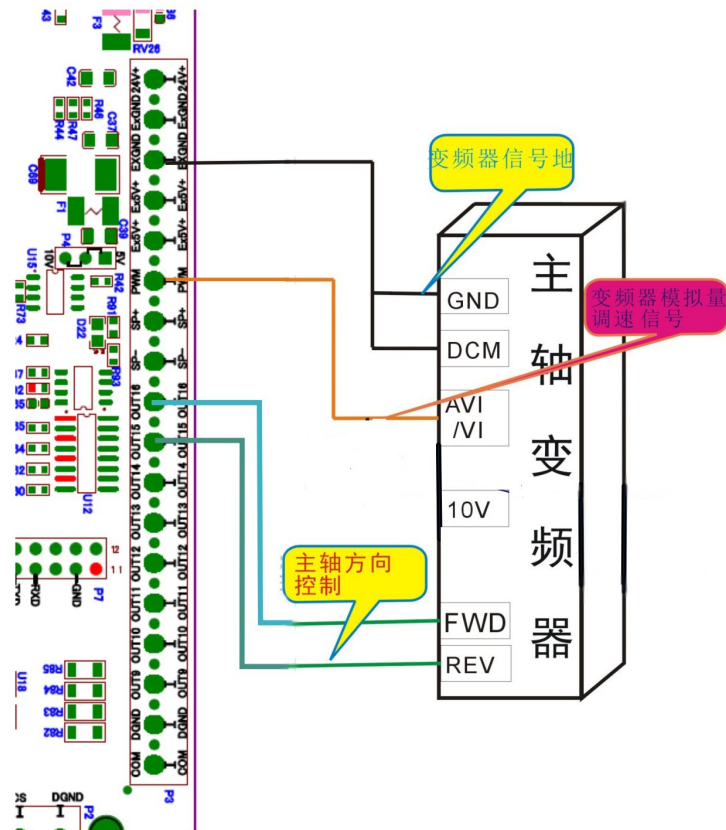
Mach3 menu " Config=> Spindle Pulleys ", enter " Pulley Selection "



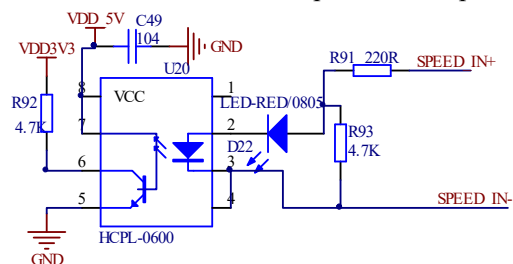
Principle diagram of the spindle speed control analog output interface

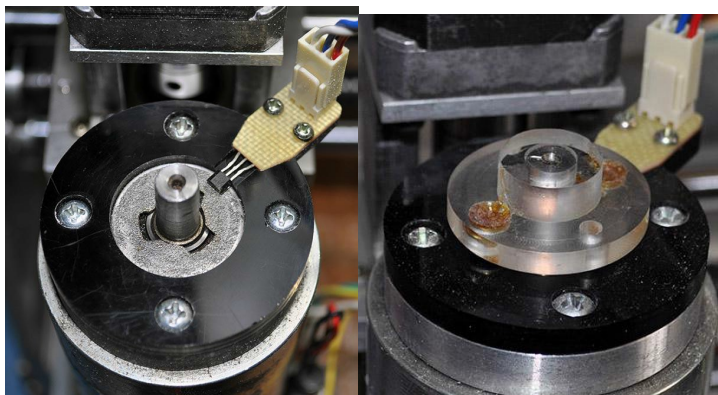
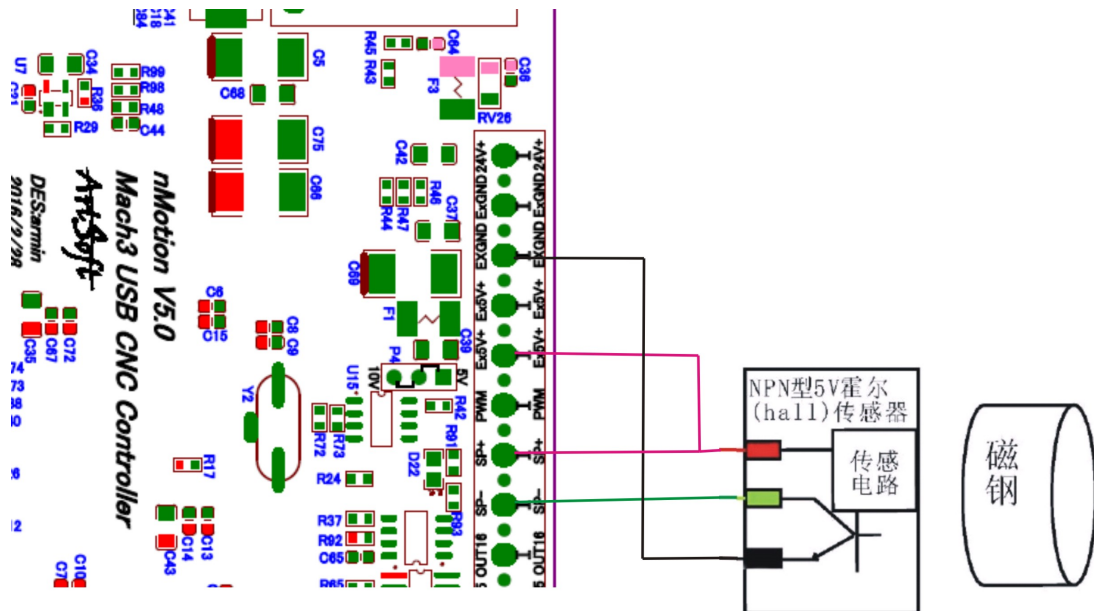
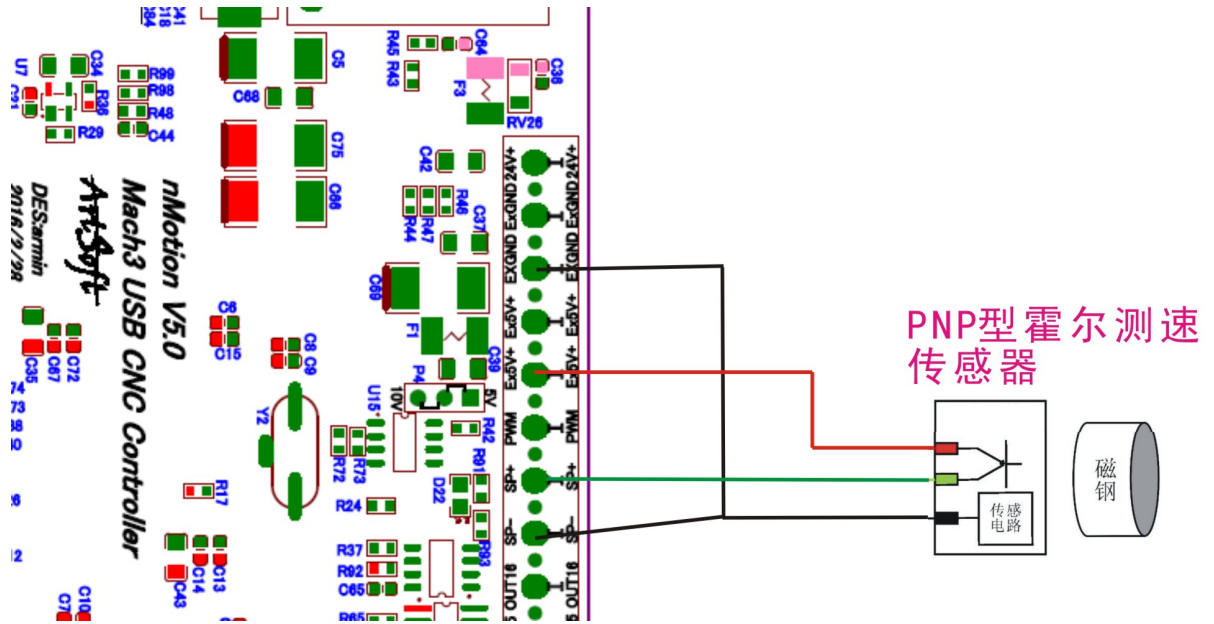


VCC_10V have not served , if you use a variable frequency speed control of the spindle and need in PWM feet pick a pull-up resistor to inverter 10V output ports.

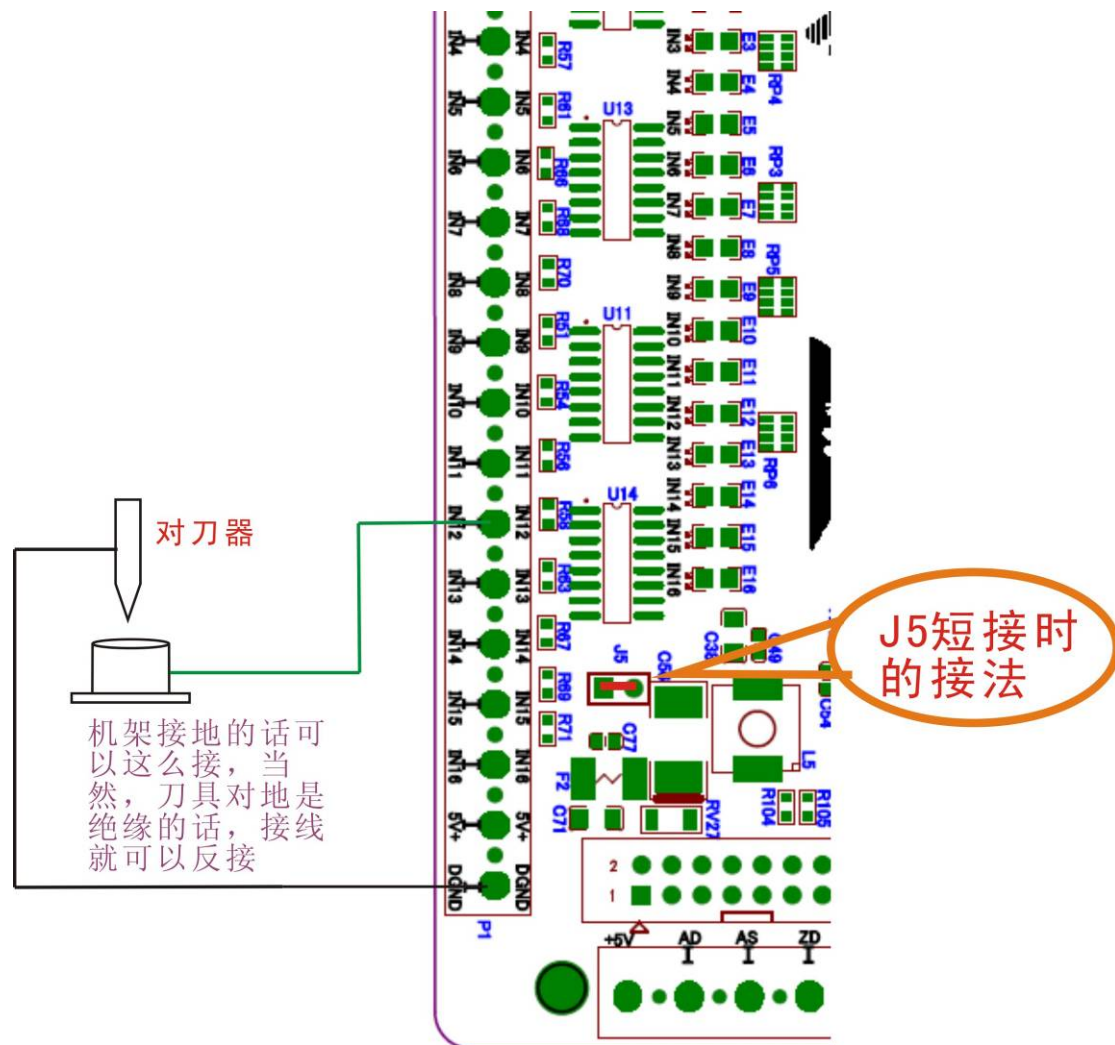


nMotion control card of the speed of the input interface schematic

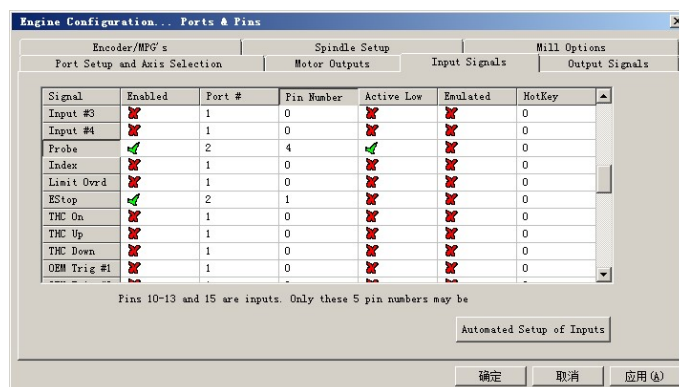




Probe connection



Config (Config => Ports and Pins)



Probe script like this:

```
FeedCurrent = GetOemDRO(818) 'Get the current settings, OEM DROs (818)=Feedrate DRO
ZCurrent = GetOemDro(802) 'OEM DROs (802)=Z DRO
GageH = GetOEMDRO(1001) 'OEMDRO(1001)=Gage Block Height
```

```
ZNew = ZCurrent - 20      'probe down 20 mm

Code "G90F100"            'slow feed rate to 100 MM/MIN
Rem Code "G4 P1"          'Pause 1 second to give time to position probe plate
Code "G31 Z" &ZNew
While IsMoving()
Sleep(10)
Wend
Call SetDro (2,GageH)      'DRO(2)=Z DRO

FinalMove = GageH + 10
Code  "G0 Z" &FinalMove
Code "F" &FeedCurrent      'restore starting feed rate    dr.lin 2009.10.16
```

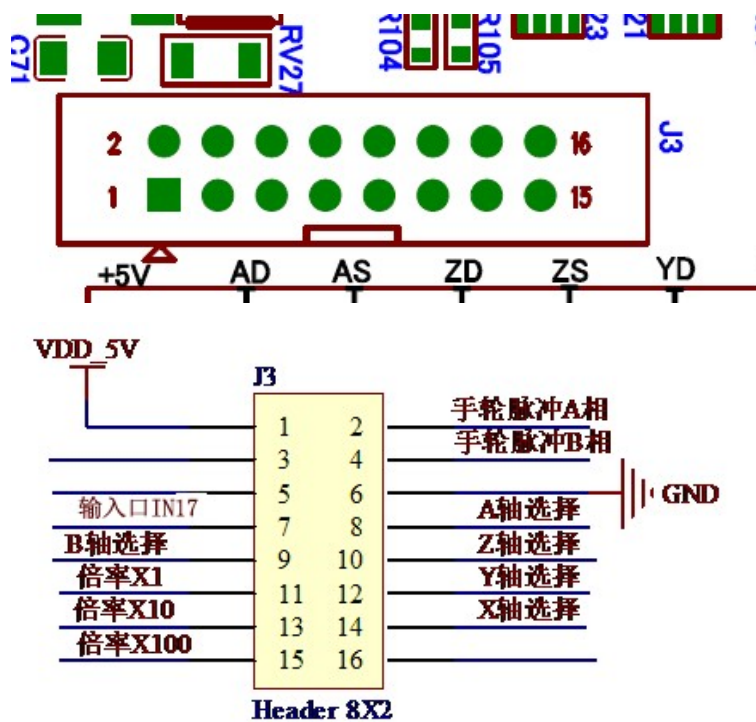
● MPG Setting



MPG use the input pin IN15 and IN16 , connect to Encode A and B signal.

If you use a full function MPG with Rate switch and Axis select,

J3 is a DB15 connector,



If you have a Metal shell with nMotion, the DB15 head is installed.

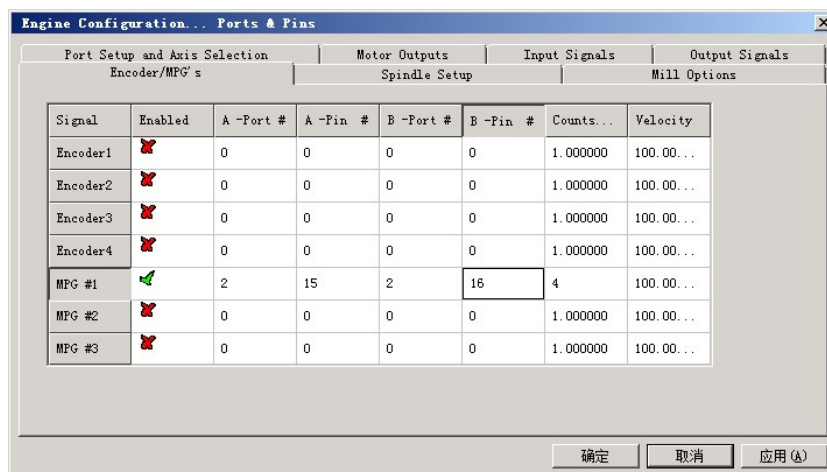
The DB15 head PIN order is like this :

1	+5V	9	Encoder A
2		10	Encoder B

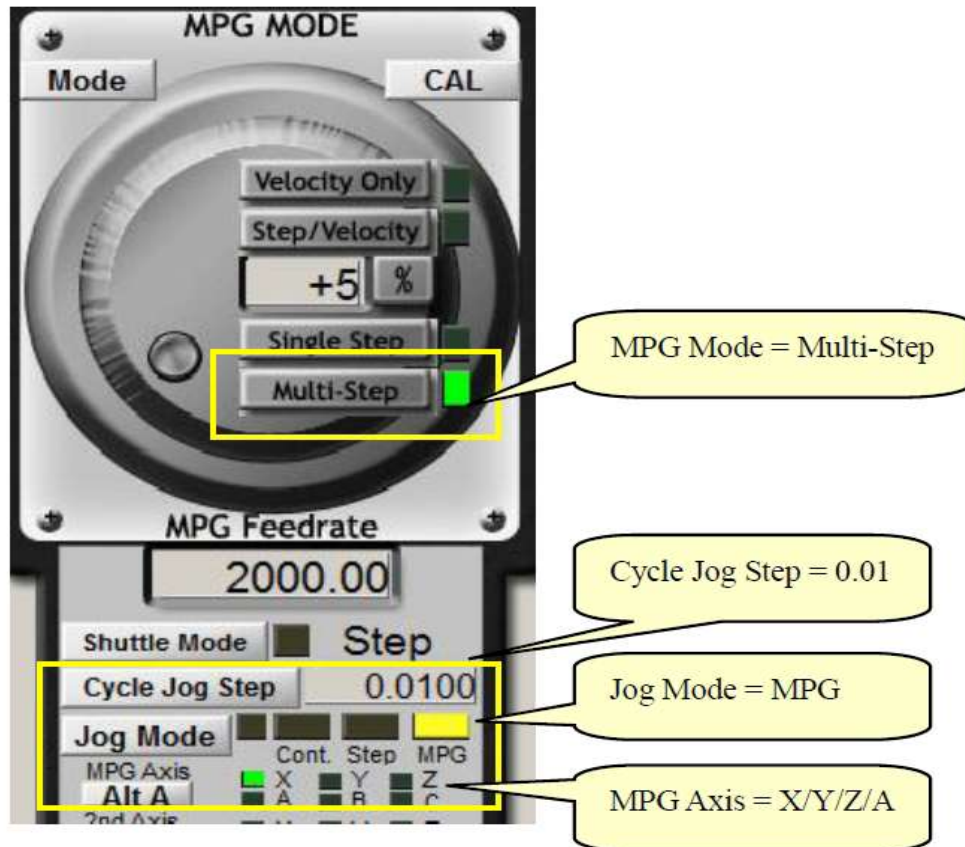
3	C axis SEL	11	GND
4	ESTOP	12	A axis SEL
5	B Axis SEL	13	Z axis SEL
6	X1	14	Y axis SEL
7	X10	15	X axis SEL
8	X100		

Software configuration

Mach3 electronic hand wheel configuration, as shown below: (Config => Ports and Pins)

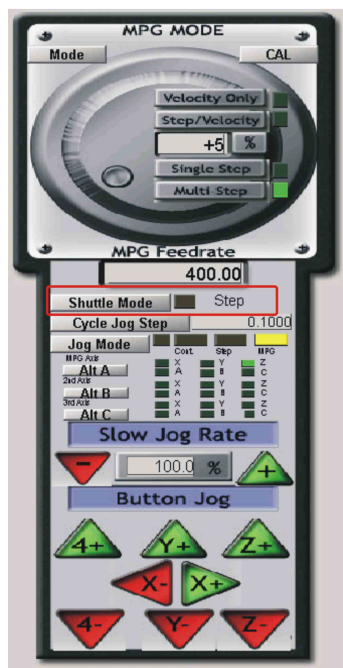


Press "TAB" key, like this



MPG soft mode:

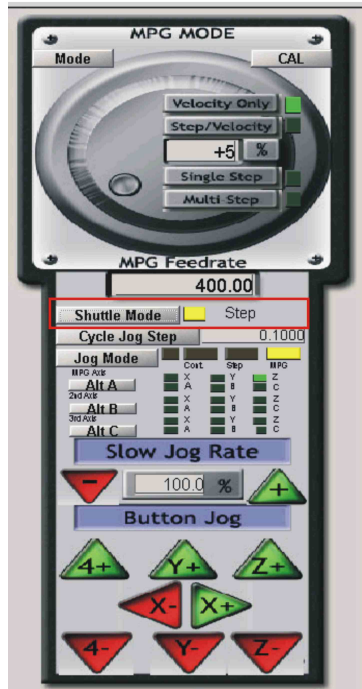
This mode fix the MPG with Mach3, so all this need mach3 to do MPG work.



Press “Shuttle Mode” button, Shuttle Mode LED is off, the MPG woke on Soft mode.

MPG hard mode

Press “Shuttle Mode” button, Shuttle Mode LED is on, the MPG woke on Hard mode.



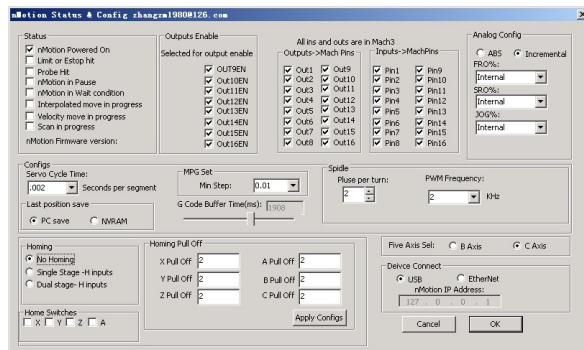
In hard mode, the plugin set need to set something.

1. MPG Mini Step, in “X1” ,the MPG 1 step need to move a short distance, this need to set the “Config Plugins” , and there is a setting like this , “MPG Set” ->”Min Step”.

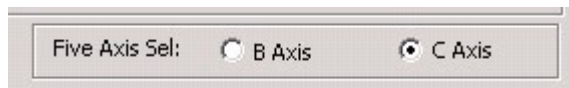


2. fifth Axis selection

nMotion mach3 USB CNC controller



If you want to use the BSEL pin to select C Axis ,you can set the config like this below.



● Using NVRAM

Select “PC save”, the position is saved in PC ,and Select”NVRAM”, the Mechanical position saved in NVRAM.

