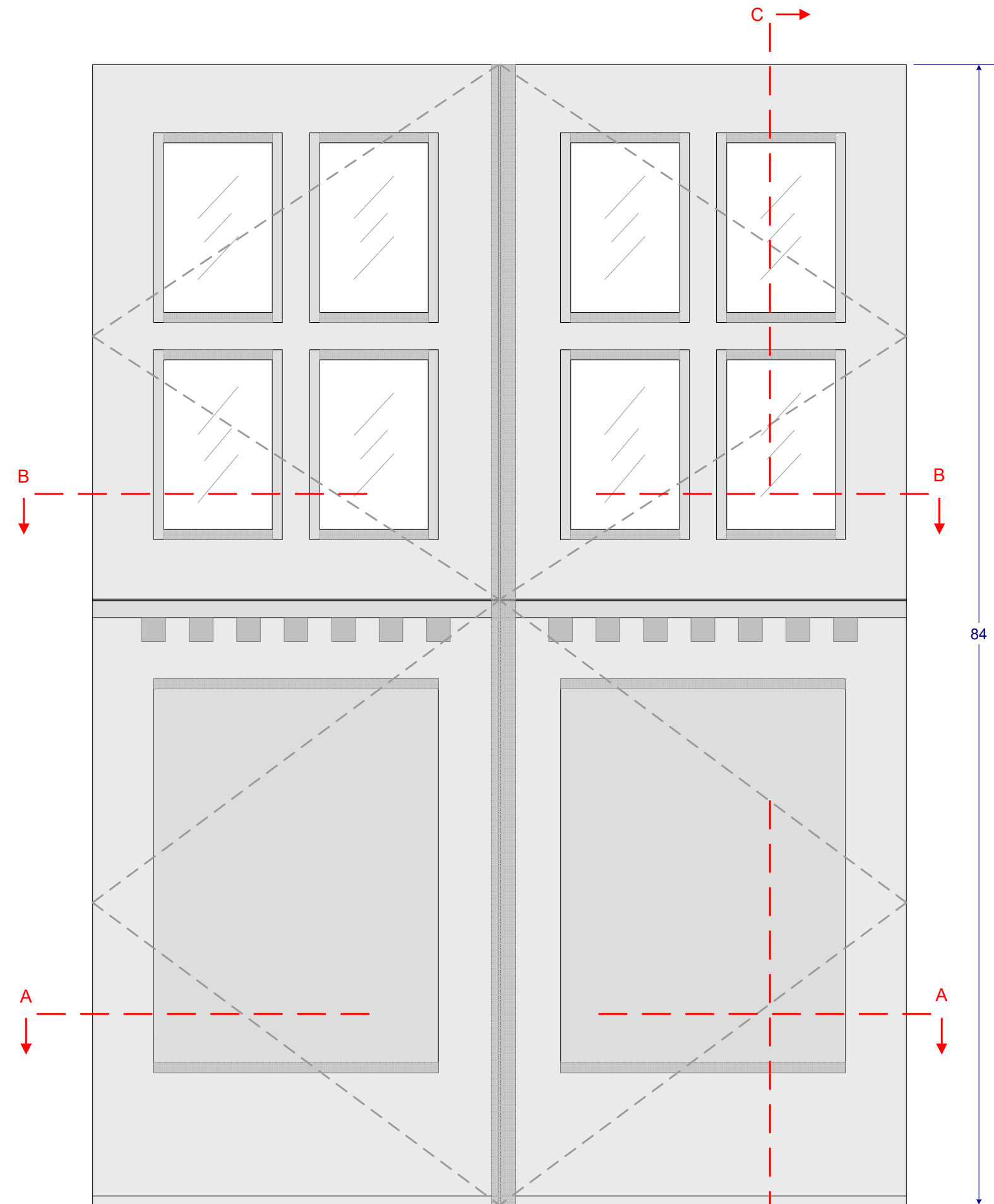
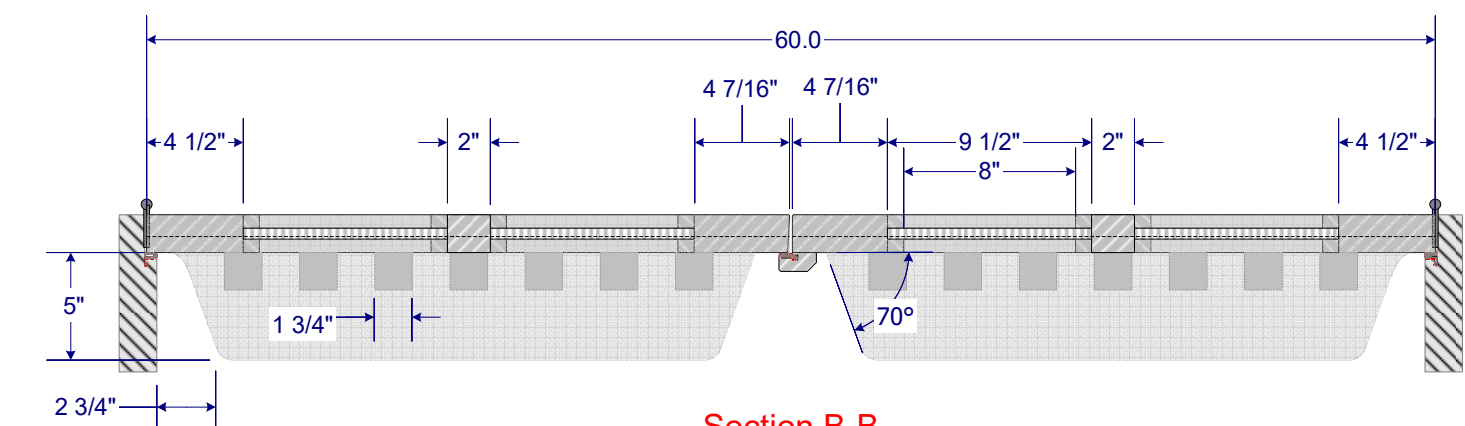


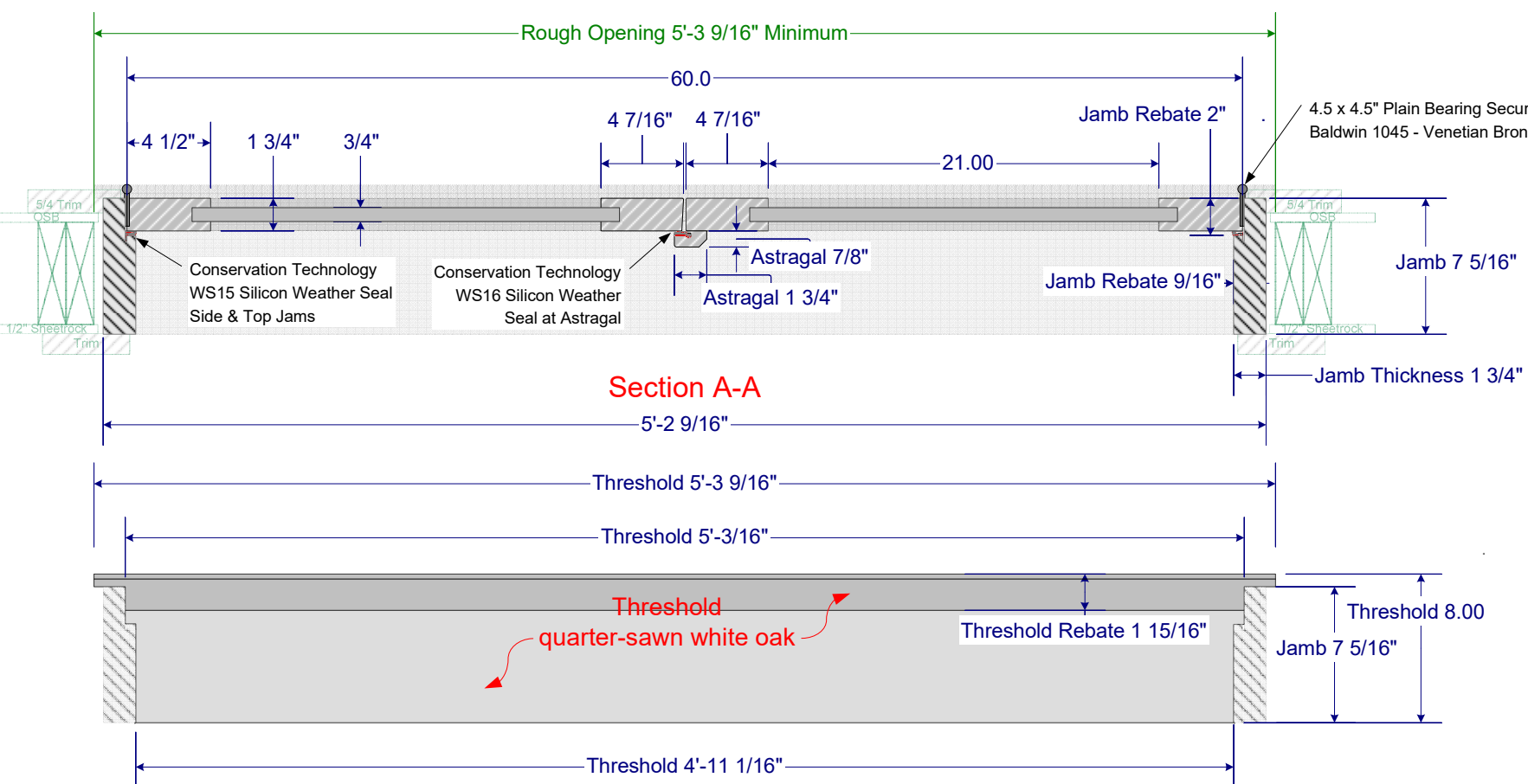
Exterior Elevation



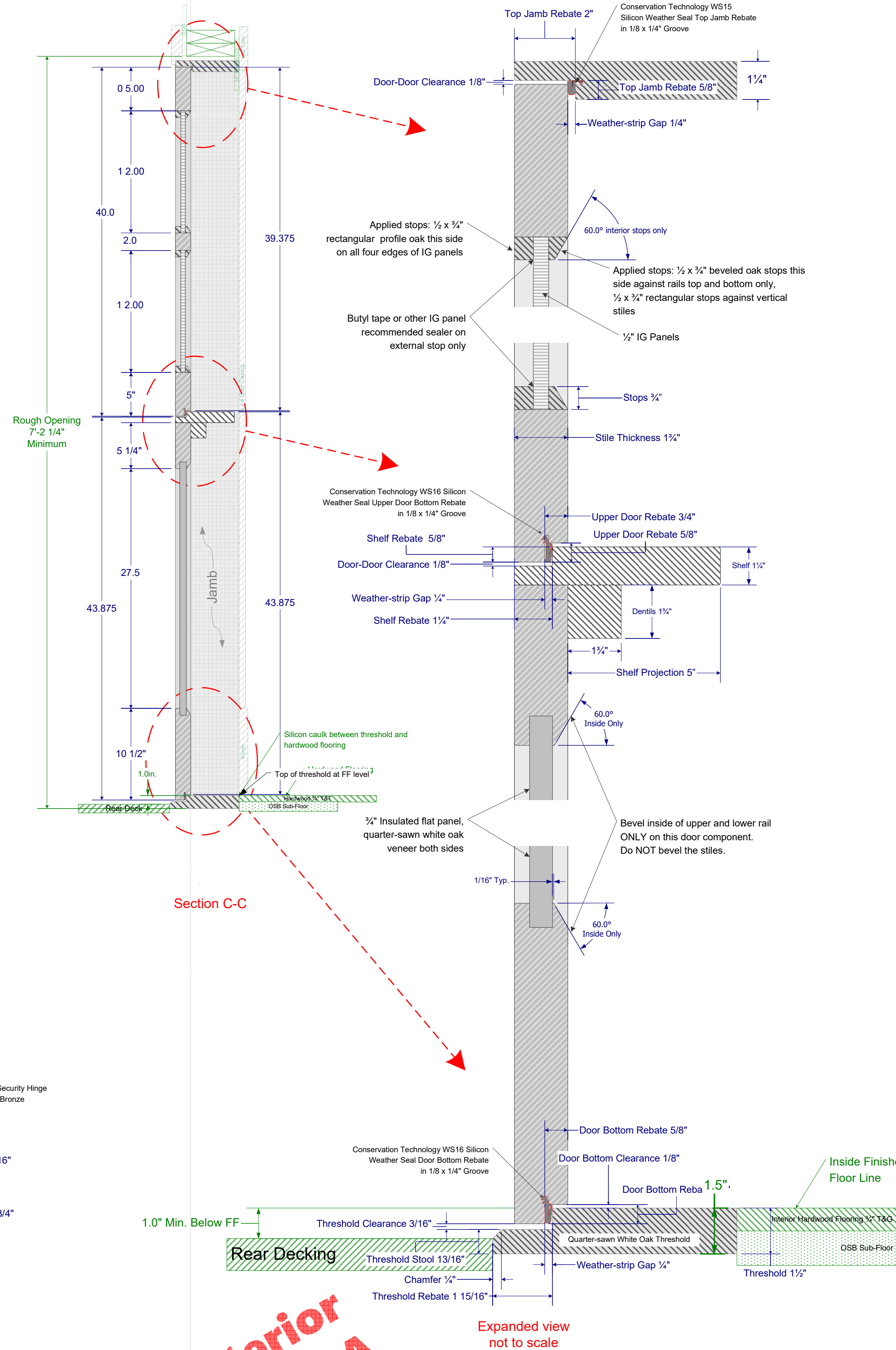
Interior Elevation



Section B-B



Section A-A



Section C-C

Rear Exterior  
Alternative A

Expanded view  
not to scale

#### Custom Exterior Door Specifications

- Doors are to be fabricated and supplied as pre-hung units (not including lockset) with jambs, thresholds and weather seals as specified in drawing.
- Complete pre-hung unit to be finish sanded ready for clear finish, fitted and tested in jamb/threshold prior to knock-down and packaging for shipment (if required).
- Construction methods illustrated are for reference only - fabricator's shop tooling and methods of construction may dictate alternative joinery. Adapt as required while respecting the details on weather seals, scantling dimensions, and these specifications.
- Door side and top jambs to be vertical grain fir, dimensioned per drawing - final painted finish provided by GC after installation.
- Thresholds to be quarter-sawn white oak.
- Stiles & Rails - Alternative 1 (preferred): laminated from dimensionally stable core material (LVL or vertical grain timber) with integral rift-sawn white oak hardwood edging and 3/16" thick rift-sawn white oak face veneer both sides. Stiles & Rails - Alternative 2: dimensionally stable solid rift-sawn white oak. Specify which method when making proposal/bid.
- Stile/Rail joinery to be tenon, floating tenon, Sipo Dominos or No-Rot dowels.
- Flat panels to be laminated using insulating core material suitable for cold climate with clear rift-sawn white oak veneer. Note veneer grain direction on drawing.
- Any fasteners used in construction are to be hidden or covered with matching hardwood plugs.
- Hinges to be included and installed per drawings. Additional door hardware provided by others.
- Glass to be 1/2" thick insulated glass panels set in removable stops and caulked/sealed per IG panel manufacturer recommendations.
- Weather stripping to be Conservation Technology silicon flapperseal per drawing, installed in grooves with CT specified clearance gaps.
- Interior and exterior finish to be performed by others. Anticipated finish will be Sikkens Cetol on exterior and Osmo Poly-X Oil or CV on interior.
- Any variation from drawing to be approved by the designer (Best Services) prior to construction.

#### Notes

- Two alternatives for the exterior doors are illustrated in the drawings. Those marked "Alternative A" are Dutch-style doors, those marked "Alternative B" are conventional doors. The decision between the two types will be by owner based on cost and proposed stile and rail construction techniques employed.
- Green colored items on drawing are for GC reference only.
- Call or email the designer for questions/suggestions. David Best, Best Services. david@bestservices.biz or 415-652-1366

#### Rear Double-Dutch Out-Swing Door

Scale: 1 1/2" = 1' - 0" Date: March 8, 2020

Best Services - Portland Oregon david@bestservices.biz

Remodel Consulting, Interior Design, Fine Woodworking 415-652-1366

Revision: