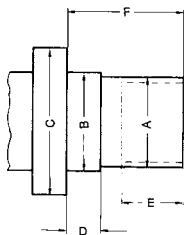


Machine spindle noses for DIN and ASA B 5.9

Machine spindle noses are not included in the scope of delivery!

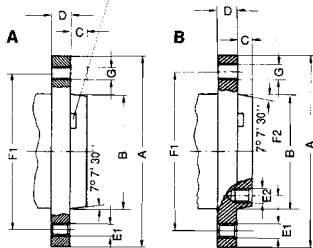
DIN 800, with thread



Mean tol. A	Bg5	Minimum C	D	E	F
M20	21	30	6,3	10	20
M24	25	36	8	12	24
M33	34	50	9	14	30
M39	40	56	10	16	35
M45	46	67	11	18	40
M52	55	80	12	20	45
M60	62	90	14	22	50
M76x6	78	112	16	30	63
M105x6	106	150	20	40	80

DIN 55021

From taper size 4 with driver



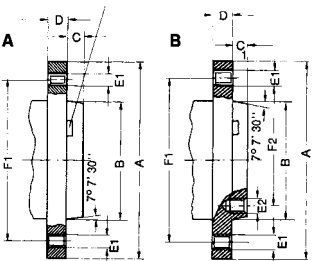
Spindle nose size					Holes on outer bolt circle (F1)		Outer bolt circle	Holes on inner bolt circle	Inner bol circle
	A	B	C	D	E1	G	F1	(F2) E2	F2
3	102	53,985	11	16	3xM10	3x10,5	75	-	-
4	112	63,525	11	20	3xM10	3x10,5	85	-	-
5	135	82,575	13	22	7xM10	4x10,5	104,8	8xM10	61,9
6	170	106,390	14	25	7xM12	4x13	133,4	8xM12	82,6
8	220	139,735	16	28	7xM16	4x17	171,4	8xM16	111,1
11	290	196,885	18	35	12xM20	6x21	235	11xM20	165,1
15	380	285,800	20	42	12xM24	6x25	330,2	11xM24	247,6
20	520	412,800	21	48	12xM24	6x25	463,6	11xM24	368,3

Shape A: Tapped holes and through-holes in flange (without inner bolt circle)

Shape B: Tapped holes and through-holes in flange (outer bolt circle) and tapped holes in inner bolt circle

ISO 702-1 (DIN 55026)

From taper size 4 with driver



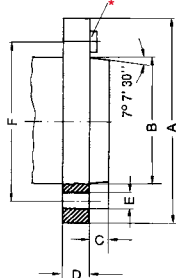
Spindle nose size						Holes on outer bolt circle	Outer bolt circle	Holes on inner bolt circle	Inner bolt circle
	A	B	C	C ₁	D	E1	F1	(F2) E2	F2
3	92	53,983	11	-	16	3xM10	70,6	-	-
4	108	63,521	11	-	20	11xM10	82,6	-	-
5	133	82,573	13	14,288	22	11xM10	104,8	8xM10	61,9
6	165	106,385	14	15,875	25	11xM12	133,4	8xM12	82,6
8	210	139,731	16	17,462	28	11xM16	171,4	8xM16	111,1
11	280	196,883	18	19,05	35	11xM20	235	8xM20	165,1
15	380	285,791	19	20,638	42	12xM24	330,2	11xM24	247,6
20	520	412,795	21	22,225	48	12xM24	463,6	11xM24	368,3

Shape A: Tapped holes in flange (outer bolt circle) without inner bolt circle.

Shape B: Tapped holes in flange (outer bolt circle) and in inner bolt circle.

ISO 702-3 (DIN 55027 und 55022)

With bayonet ring fixing (ISO 702/III)



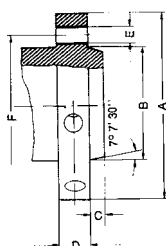
* From taper size 4 with driver

Spindle nose size	A	B	C	D	Number of holes x E	F
3	102	53,985	11	16	3x21	75
4	112	63,525	11	20	3x21	85
5	135	82,575	13	22	4x21	104,8
6	170	106,390	14	25	4x23	133,4
8	220	139,735	16	28	4x29	171,4
11	290	196,885	18	35	6x36	235
15	400	285,800	19	42	6x43	330,2
20	540	412,800	21	48	6x43	463,6

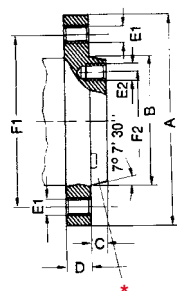
Machine spindle noses for DIN and ASA B 5.9

Machine spindle noses are not included in the scope of delivery!

ISO 702-2 (DIN 55029 and ASA B 5.9 D1)
Camlock fixing (ISO 702-2)



Typ A1-A2, B1-B2



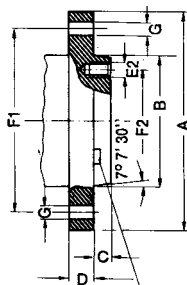
A1: Tapped holes in flange (outer bolt circle) and inner bolt circle. From taper size 4 with driver.

A2: Tapped holes in flange (outer bolt circle) without inner bolt circle.



B1: Through-holes in flange (outer bolt circle), tapped holes in inner bolt circle - from taper size 4 with driver.

B2: Through-holes in flange (outer bolt circle) without inner bolt circle.



* From taper size 4 with driver

Spindle nose size	A	B	C	D	E	F
3	92,1	53,985	11,1	31,8	3x15,1	70,66
4	117,5	63,525	11,1	33,3	3x16,7	82,55
5	146	82,575	12,7	38,1	6x19,8	104,8
6	181	106,390	14,3	44,5	6x23	133,4
8	225,4	139,735	15,9	50,8	6x26,2	171,4
11	298,5	196,885	17,5	60,3	6x31	235
15	403	285,800	19	69,9	6x35,7	330,2
20	546	412,800	21	82,5	6x42,1	463,6

Latest edition of relevant DIN standard applies in each case

Spindle nose size	A	B	C-0,025	D	Holes on outer bolt circle (F1)	Outer bolt circle	Holes on inner bolt circle (F2)	Inner bolt circle
	A	B	C-0,025	D	E1	F1	E2	F2

A1 (corresponds ISO 702-1)

5	133,4	82,575	14,288	22,2	11x 7/16-14 UNC	104,8	8x 7/16-14 UNC	61,9
6	165,1	106,390	15,875	25,4	11x 1/2-13 UNC	133,4	8x 1/2-13 UNC	82,6
8	209,5	139,735	17,462	28,6	11x 5/8-11 UNC	171,4	8x 5/8-11 UNC	111,1
11	279,4	196,885	19,05	34,9	11x 3/4-10 UNC	235	8x 3/4-10 UNC	165,1
15	381	285,800	20,638	41,3	12x 7/8-9 UNC	330,2	11x 7/8-9 UNC	247,6
20	520	412,800	22,225	47,6	12x 1-8 UNC	463,6	12x 1-8 UNC	368,3

Spindle nose size	A	B	C	D	Holes on outer bolt circle (F1)	Outer bolt circle
	A	B	C	D	E1	F1

A2 (corresponds ISO 702-1)

3	92,1	53,985	11,1	15,9	3x 7/16-14 UNC	70,66
4	108	63,525	11,1	19	11x 7/16-14 UNC	82,55
5	133,4	82,575	12,7	22,2	11x 7/16-14 UNC	104,8
6	165,1	106,390	14,3	25,4	11x 1/2-13 UNC	133,4
8	209,5	139,735	15,9	28,6	11x 5/8-11 UNC	171,4
11	279,4	196,885	17,5	34,9	11x 3/4-10 UNC	235
15	381	285,800	19	41,3	12x 7/8-9 UNC	330,2
20	520	412,800	20,6	47,6	12x 1-8 UNC	463,6

Spindle nose size	A	B	C-0,025	D	F1 G	Outer bolt circle	Holes on inner bolt circle (F2)	Inner bolt circle
	A	B	C-0,025	D	F1 G	F1	E2	F2

B1

5	133,4	82,575	14,288	22,2	11x11,9	104,8	8x 7/16-14 UNC	61,9
6	165,1	106,390	15,875	25,4	11x13,5	133,4	8x 1/2-13 UNC	82,6
8	209,5	139,735	17,462	28,6	11x16,7	171,4	8x 5/8-11 UNC	111,1
11	279,4	196,885	19,05	34,9	11x20,2	235	8x 3/4-10 UNC	165,1
15	381	285,800	20,638	41,3	12x23,4	330,2	11x 7/8-9 UNC	247,6
20	520	412,800	22,225	47,6	12x26,6	463,6	12x 1-8 UNC	368,3

Spindle nose size	A	B	C	D	G	Outer bolt circle
	A	B	C	D	G	F1

B2

3	92,1	53,985	11,1	15,9	3x11,9	70,66
4	108	63,525	11,1	19	11x11,9	82,55
5	133,4	82,575	12,7	22,2	11x11,9	104,8
6	165,1	106,390	14,3	25,4	11x13,5	133,4
8	209,5	139,735	15,9	28,6	11x16,7	171,4
11	279,4	196,885	17,5	34,9	11x20,2	235
15	381	285,800	19	41,3	12x23,4	330,2
20	520	412,800	20,6	47,6	12x26,6	463,6

In each case the latest edition of ASA B 5.9 will apply