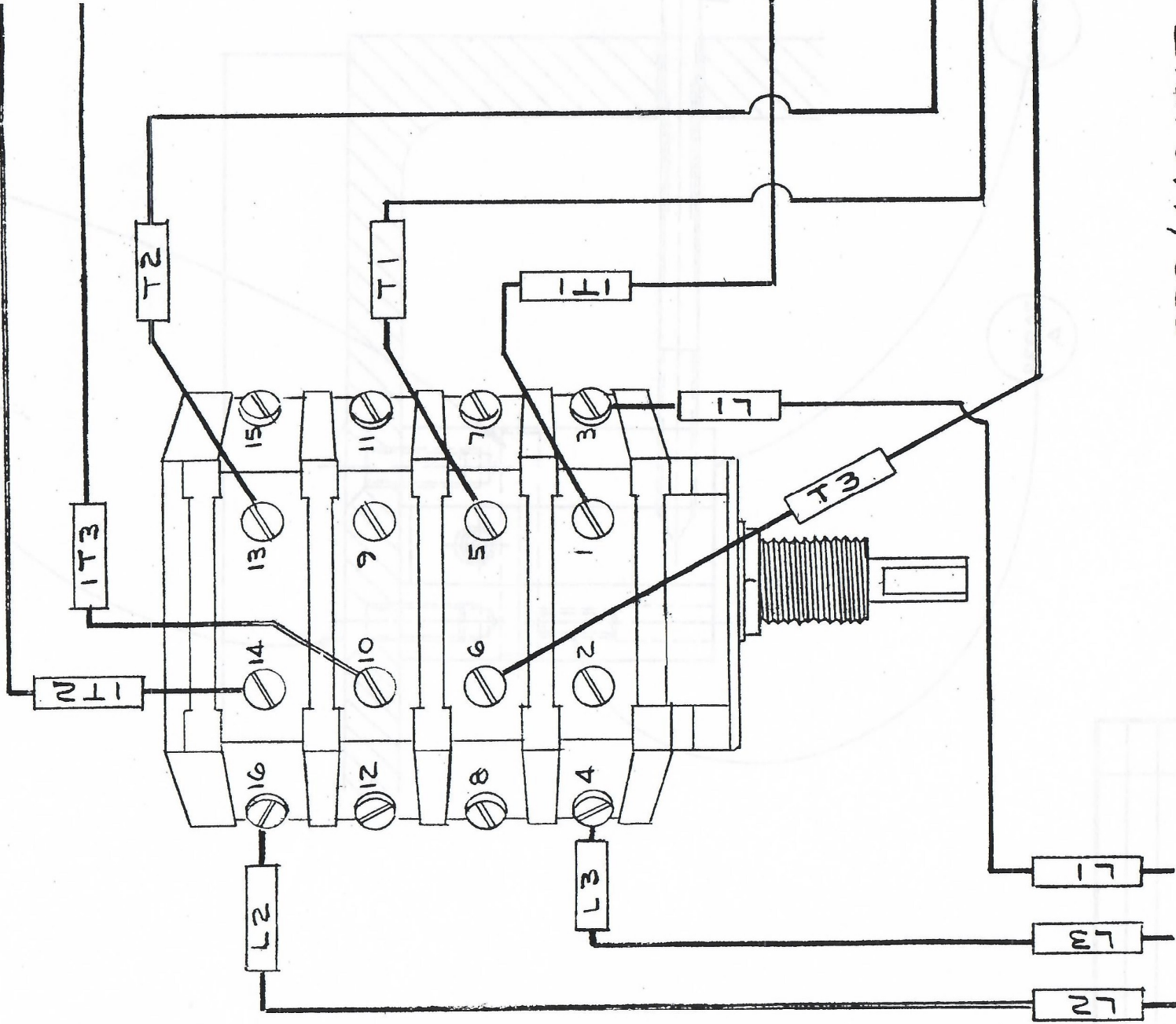


HEAT TREAT.	FINISH	USED ON "2A" SPLINED	NO. REQ.	TOLERANCE ON FRACTIONS ± 0.10 ON DECIMALS

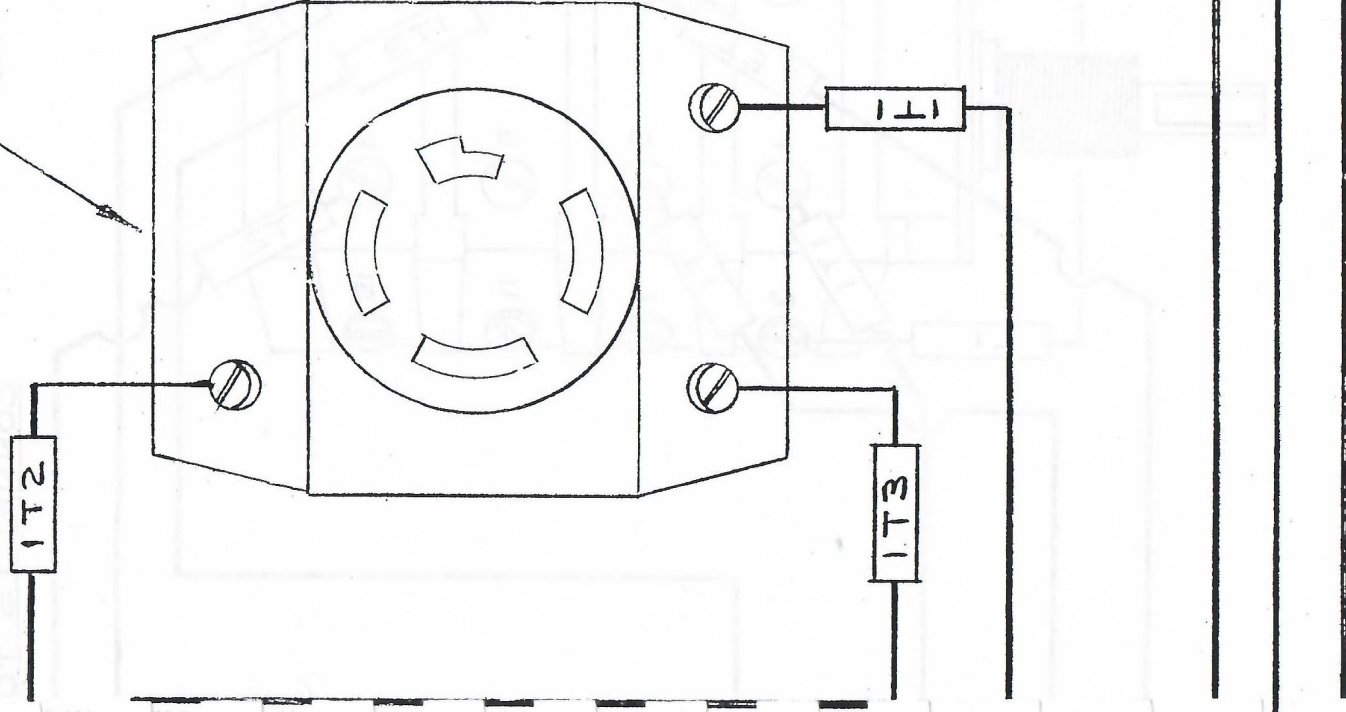


220/440 VOLT -
 6-12 HYDRAULIC
 6-18 HYDRAULIC
 WITHOUT DUST

TO LINE

MATERIAL

HYDRAULIC PUMP LINE



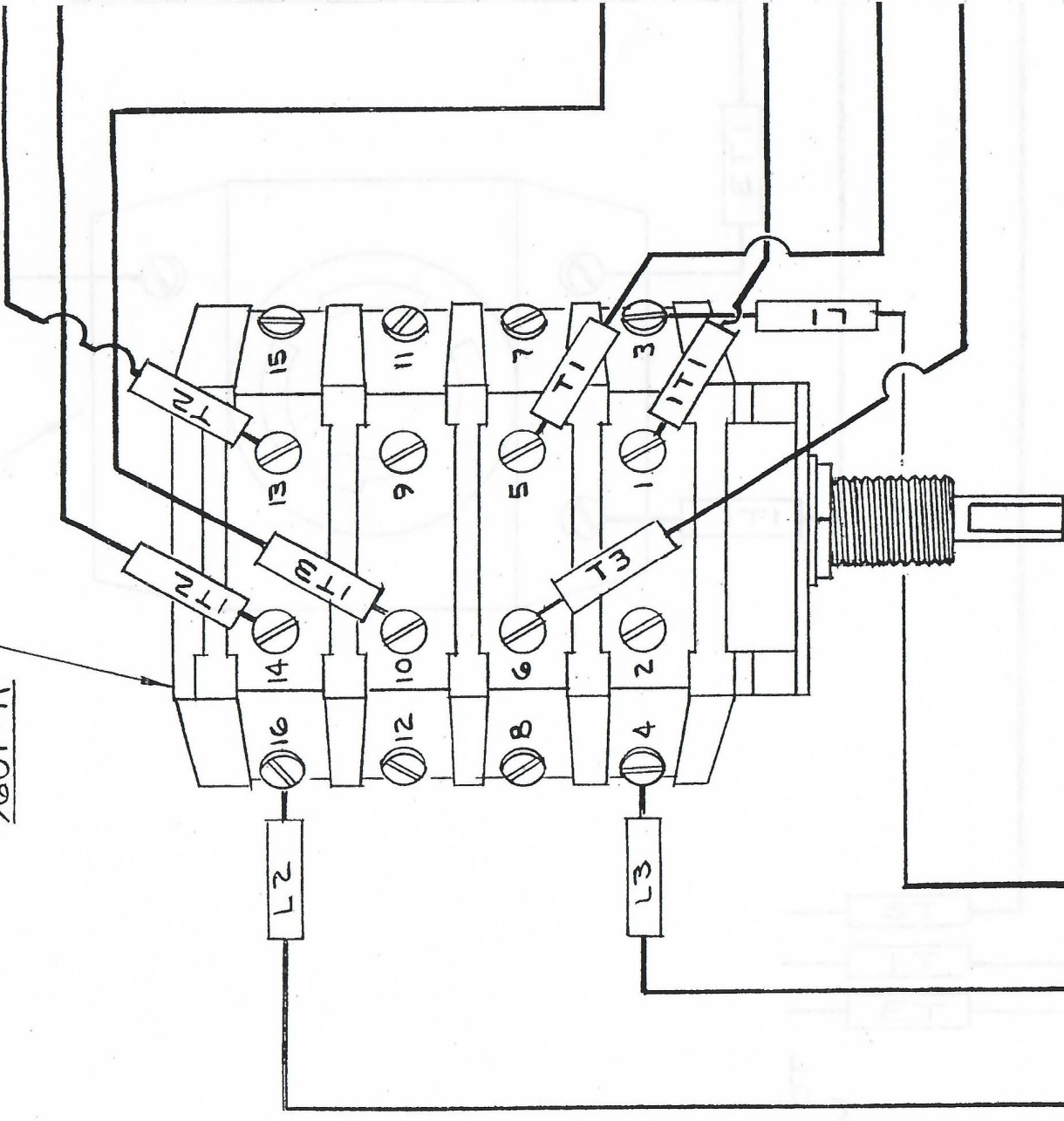
3 PHASE
FIRING
CHALLENGER
COLLECTOR

3 PHASE GRINDER CHALLENGER COLLECTOR	HEAT TREAT.	FINISH	USED ON	NO. REQ.	TOLERANCE, ON FRACTIONS $\pm .010$ ON DECIMALS AS SHOWN
---	-------------	--------	---------	----------	--

ISSUE	CHANGE	DATE	BY		
PART NAME					
WIRING DIAGRAM					
DRAWN		DATE			
DNT		2-25-64			
CHECKED					
SCALE		S.O.F			
BOYAR-SCHULTZ CORPORATION					
BROADVIEW, ILL.					

HYDRAULIC PUMP
CONNECTS TO

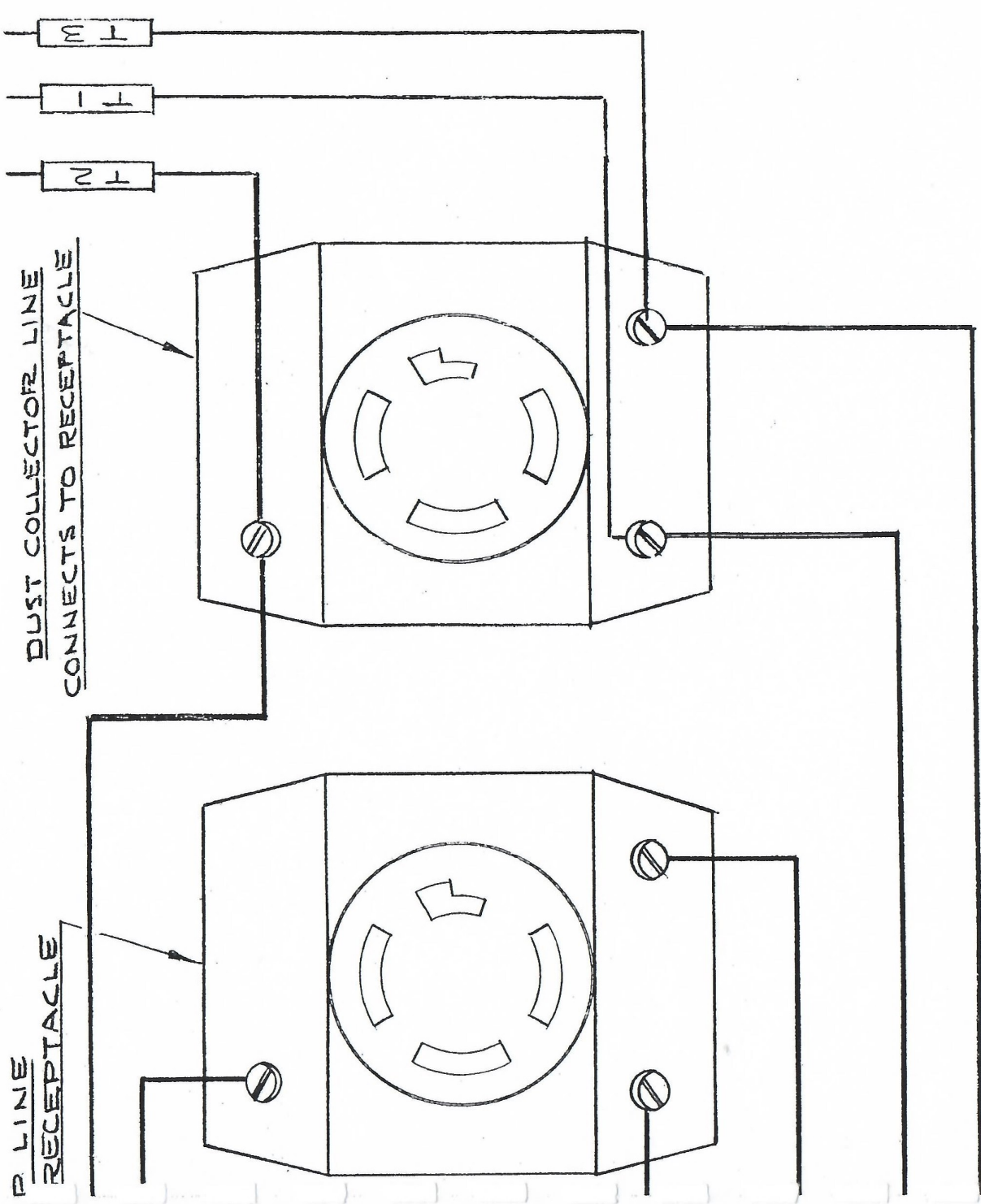
9601-A



220/440 VC
6-12 HYDRAU
6-18 HYDRAU
WITH DUST

MATERIAL

TO SPINDLE MOTOR



LIT - PHASE
LIC GRINDER
LIC CHALLENGER
COLLECTOR

HEAT TREAT.	FINISH	USED ON	NO. REQ.	TOLERANCE ON FRACTIONS $\pm .010$ ON DECIMALS
<p> 1.1 - 3 PHASE LIC GRINDER LIC CHALLENGER COLLECTOR </p>				

ISSUE	CHANGE	DATE	BY

PART NAME	SCALE	S.O.F.
WIRING DIAGRAM	NONE	
DRAWN <u>RATP</u>	2-25-64	
CHECKED		

BOYAR-SCHULTZ CORPORATION	
BROADVIEW III	