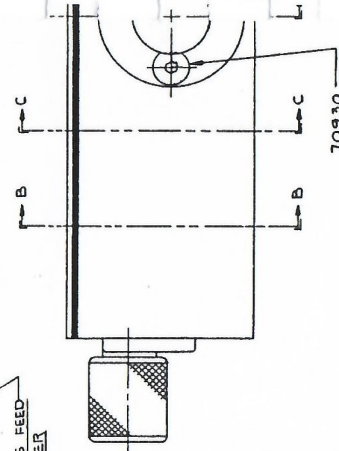
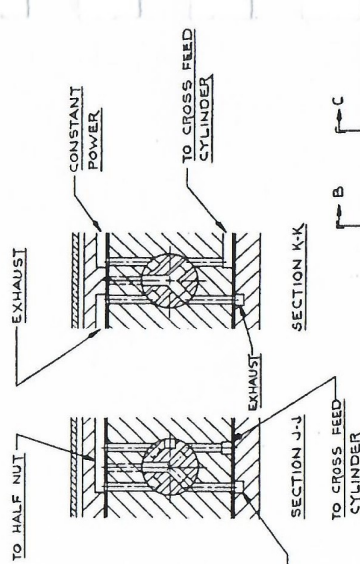
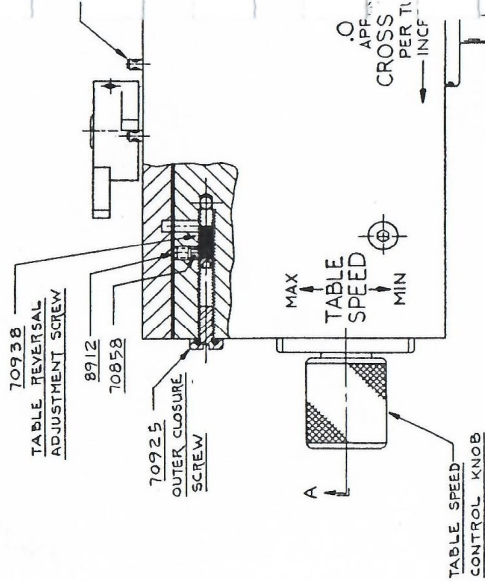
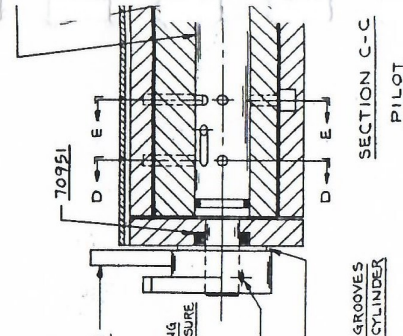
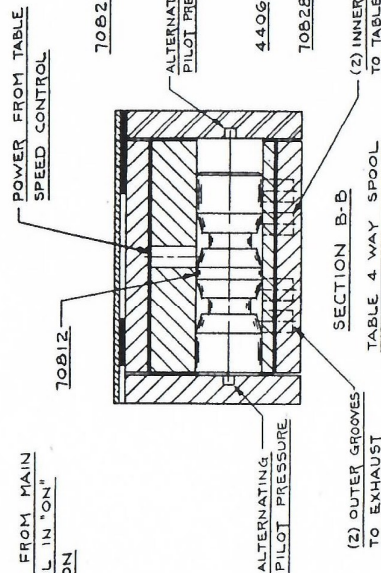
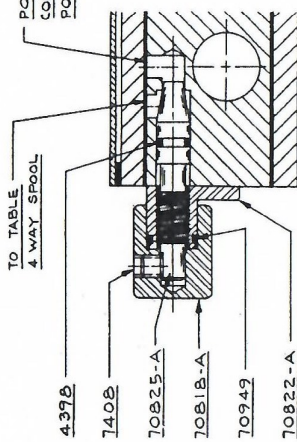
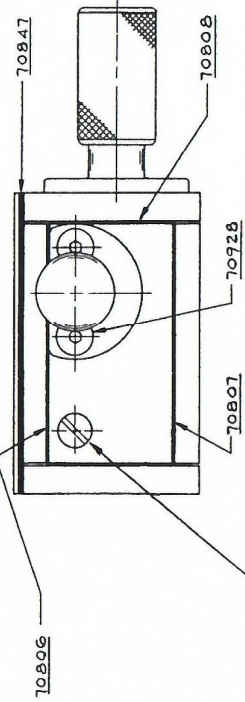
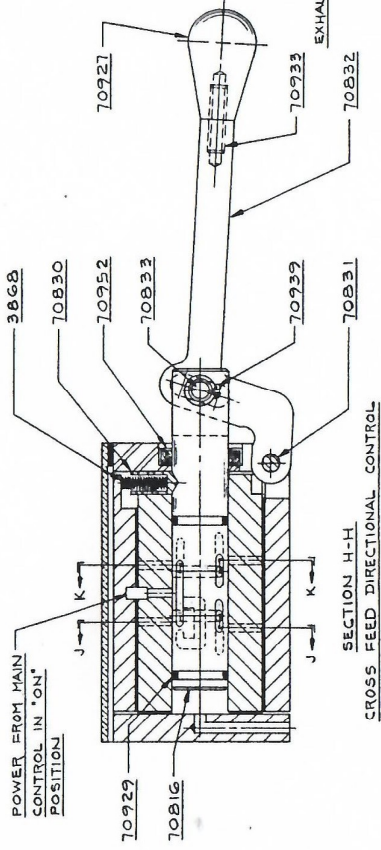
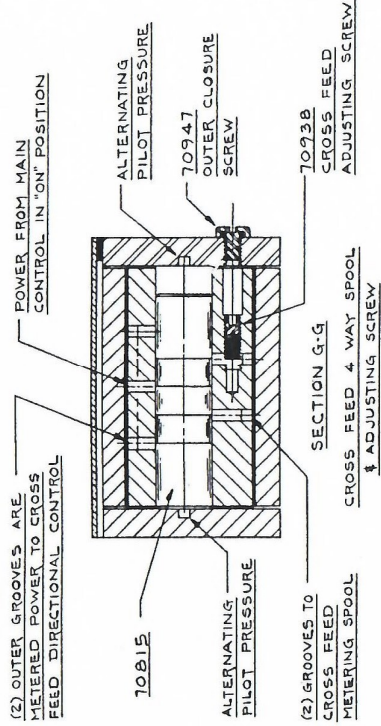


TABLE REVERSAL ADJUSTMENT

TURN MACHINE 'OFF'. PLACE TABLE DOGS TOGETHER FOR MINIMUM TABLE STROKE POSITION. SET TABLE SPEED AT MAXIMUM. REMOVE OUTER CLOSURE SCREW. DO NOT MISPLACE THIS SCREW, AS IT CANNOT BE REPLACED WITH A STANDARD SCREW. INSERT A 3/32 HEXAGON ALLEN WRENCH INTO INNER TABLE REVERSAL ADJUSTMENT SCREW IN PREPARATION FOR ADJUSTMENT. TURN MACHINE 'ON' AND RUN TABLE HYDRAULICALLY. ADJUST SCREW TO OBTAIN A 4" TABLE STROKE. ADVANCE SCREW TO INCREASE, OR RETRACT SCREW TO DECREASE STROKE. IF POSSIBLE, ADJUST WHEN HYDRAULIC OIL IS AT ROOM TEMPERATURE. THE 4" STROKE RECOMMENDED WILL RESULT IN SMOOTH TABLE REVERSAL EVEN WITH MAXIMUM CHUCK WEIGHT ON TABLE, BUT MAY BE ALTERED TO ANY POINT AT WHICH REVERSAL SMOOTHNESS OCCURS. A SMALL AMOUNT OF OIL WILL LEAK FROM ADJUSTING SCREW HOLE DURING ADJUSTMENT. THIS IS NORMAL, AND LEAKAGE WILL NOT OCCUR ON RE-INSTALLATION OF OUTER CLOSURE SCREW AFTER ADJUSTMENT IS COMPLETE.



in one-half thousandths (.0005). One complete revolution of this handwheel raises or lowers the spindle fifty thousandths (.050).

If the elevating handwheel rotates too freely, it can be adjusted for the proper rotating tension by means of the tension adjusting device designed for this purpose. To gain access to this adjustment remove the two (2) flat head screws securing the column cover to the column.

Just to the rear and right of the handwheel, you will find the socket head adjusting screw. To increase the tension on the handwheel turn the screw clockwise. To decrease the tension turn the screw counterclockwise.

VERTICAL FEED GEARS

Remove cover from top of the vertical column. The pinion is secured to the elevating handwheel shaft just below the bevel gear - backlash is adjusted by means of a locking collar.

NOTE: All handwheels are fitted with needle bearings for long lasting ease of operation.

GRINDING WHEEL

The grinding wheel is mounted on an adapter which, in turn, is mounted on the spindle. A special wheel mounting wrench, furnished with each machine, fits the wheel nut which holds the grinding wheel on the adapter and the nut which holds adapter on the spindle. One grinding wheel is furnished with your machine. The various responsible manufacturers of grinding wheels will gladly give you information on special wheel needs.

GRINDING WHEEL ADAPTER

A wheel puller has been furnished to remove the grinding wheel adapter from the spindle. To remove the adapter remove the wheel nut with the spanner wrench provided and screw the puller into the wheel adapter. Tighten the puller screw until the wheel adapter slips off.

WET GRINDING

All machines may be adapted for wet grinding, but unless otherwise ordered, the machine is shipped equipped for dry grinding only. Information describing the additional equipment required for wet grinding will be sent on request.

LUBRICATION

The motorized automatic lubrication system lubricates the machine completely, no other lubrication is required.

The following lubricants are recommended for this machine:

<u>ITEM</u>	<u>OILING PERIOD</u>	<u>AMOUNT OF LUBRICATION</u>	<u>LUBRICANT</u>
Automatic Oiling Reservoir	As required	Fill Reservoir	Sunoco Way Oil (Sun Oil Co.)
Hydraulic Reservoir	Semi-Annually	3 Gals.	D.T.E. Light Oil (Socony-Vacuum Oil Co.)

ELECTRICAL EQUIPMENT

The motor furnished with this machine is a 1 H.P., 3450 R.P.M. totally enclosed ball bearing, precision balanced dynamically for smooth and vibration free operation. Motor bearings do not require additional lubrication as they have been permanently lubricated for years of trouble free service.

The lamp is supplied with extension cord for 110 volt circuit.

OPTIONAL ACCESSORIES

1. 6" x 10" Walker permanent magnetic chuck
2. 6" x 12" Walker permanent magnetic chuck
3. 6" x 18" Walker permanent magnetic chuck (Challenger Only)
4. Hanchett 5" x 10" Magna-Lock electric magnetic chuck complete with rectifier.
5. Hanchett 6" x 12" Magna-Lock electric magnetic chuck complete with rectifier
6. Hanchett 6" x 18" Magna-Lock electric magnetic chuck complete with rectifier (Challenger only)
7. Diamond holder for wheel dressing
8. Mounted diamond to fit holder
9. Wet grinding splash guard
10. Coolant tank and pump
11. Dust collector complete with nozzle